

CUSTOMIZABLE PEDICLE SCREW INSTRUMENTS AND SETS

WITH STAINLESS STEEL TRAYS / INSERTS

INDEX

Customizable pedicle screw instruments and sets	2	Straight-Quick change ratched handle with 1/4" connector, cannulated	19	Rod bender	36
Pedicle opener with stop	4	T-Torque quick change handle 12NM with 1/4" connector	20	Rod holder, stable	37
Pedicle awl straight	5	T-Quick change handle with 1/4" connector, cannulated	21	Distractor forceps	38
Pedicle awl straight, small	6	Persuader L-form, dismountable	22	Compressor forceps	39
Pedicle awl curved	7	Persuader Straight-form, dismountable	23	Parallel-distractor forceps	40
Pedicle awl curved, small	8	Persuader Tower-Form, dismountable	24	Parallel-compressor forceps	41
Pedicle awl straight, cannulated with trokar	9	Screwdriver reposition with Hex / Torx and square adapter 1/4"	25	Coronal-bender, left	42
Sounding probe, straight	10	Screwdriver with Hex / Torx and square adapter 1/4"	26	Coronal-bender, right	43
Sounding probe, curved	10	Nutholder with Torx and square adapter 1/4"	27	Insitu-bender, left	44
Thread cutter with square adapter 1/4"	11	Reduction screw head breaker	28	Insitu-bender, right	44
Thread cutter, cannulated with square adapter 1/4"	12	Hexagonal eye key	29	Silicone handles	45
Guide pin, A- and B-Type	13	Rod pusher, straight with silicone handle	30	Coupling systems	47
Templates in silicone	14	Rod pusher, curved with silicone handle	31	Customization options	48
Screwdriver with square adapter 1/4" for polyaxial and monoaxial PD-screws, cannulated, dismountable	15	Rod Fork	32	About Rudischhauser GmbH	49
Rod caliper, 30 – 130 mm	16	Rod Fork with square adapter 1/4"	33		
Rodholder, small	17	Counter torque with silicone handle	34		
T-Quick change ratched handle with 1/4" connector, cannulated	18	Counter torque with square adapter 1/4"	35		



RUDISCHHAUSER CUSTOMIZABLE PEDICLE SCREW INSTRUMENTS AND SETS

Posterior interbody fusion techniques are increasingly recommended by spine surgeons. Improved surgical techniques and improved interbody implants are among the reasons interest in these techniques is increasing. Posterior procedures with transpedicular instrumentation provides both posterior and anterior stabilization through different kind of incision and approaches.

Posterior fusion represents a wide spectrum of techniques.

The **R**udischhauser standard pedicle screw instruments, trays and set configuration are indicated to bring the right support to perform a transpedicular stabilization for one or more level from lumbar to cervical according to the right indication and requirements of the customers.

A variety of **R**-instrument sizes, geometries, handles as well as customized instruments are available for the preparation, implantation and fixation.

Rudischhauser Surgical Instruments and Implant Manufacturing GmbH is developing and producing the highest quality with long term experience by using latest technology since 1954.

With our own design and development department we develop, optimize and employ state of the art manufacturing. We work in close cooperation with our worldwide customers, in accordance with latest requirements of international markets.

Our goods range from delicate micro instruments to complete assemblies with inhouse UDI laser marking to suit the latest requirements for QM and individual customer requirements.

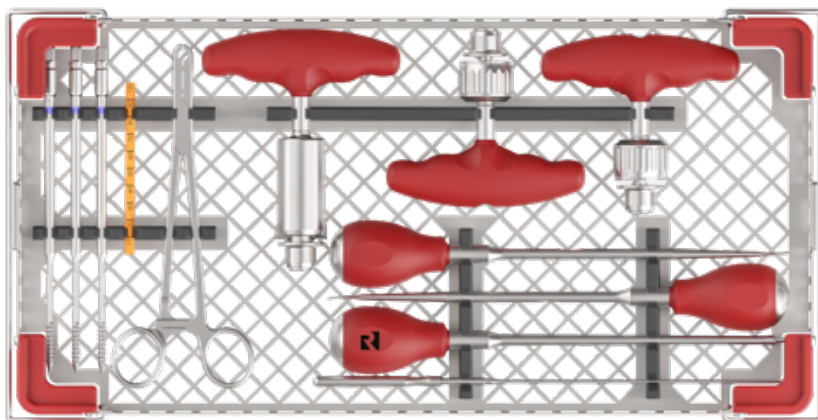
Rudischhauser GmbH is DIN EN ISO 13485:2016 certified and FDA registered by FDA 21 CFR part 820 standard.


MADE IN GERMANY



CUSTOMIZABLE PEDICLE SCREW INSTRUMENTS AND SETS

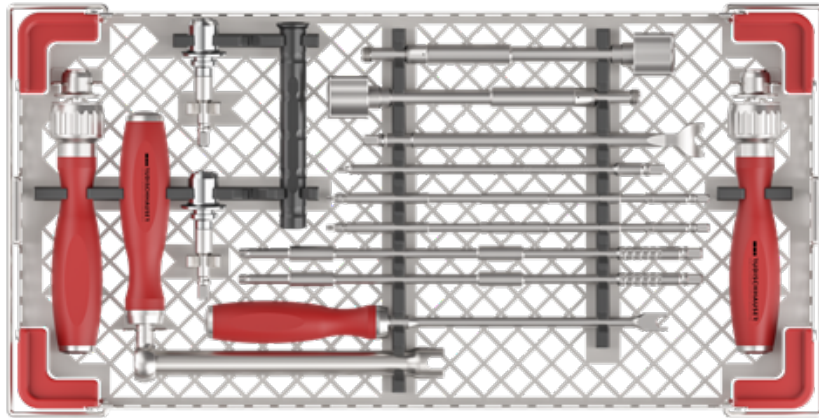
TRAY 1



ITEM-ID	DESCRIPTION
R12-OK40XX-1S	Pedicle opener with stop
R12-VK40XX-1G	Pedicle awl straight
R12-VK40XX-1B	Pedicle awl curved
R12-WH70000-S1	Sounding probe, straight
	Thread cutter with square adapter 1/4"
	Templates in silicone
	Rodholder, small
	T-Quick change ratched handle with 1/4" connector, cannulated
	T-Torque quick change handle 12 NM with 1/4" connector
R12-VK40XX-2G	Pedicle awl straight, small (optional)
R12-VK40XX-2B	Pedicle awl curved, small (optional)
R12-VK40XX-1T	Pedicle awl straight, cannulated with trokar (optional)
R12-WH70000-C1	Sounding probe, curved (optional)
	Guide pin, A and B-Type (optional)
R12-U000000-C1	Rod caliper, 30 – 130 mm
	Thread cutter, cannulated with square adapter 1/4" (optional)
R12-HT23X-A3	T-Quick change handle with 1/4" connector, cannulated (optional)

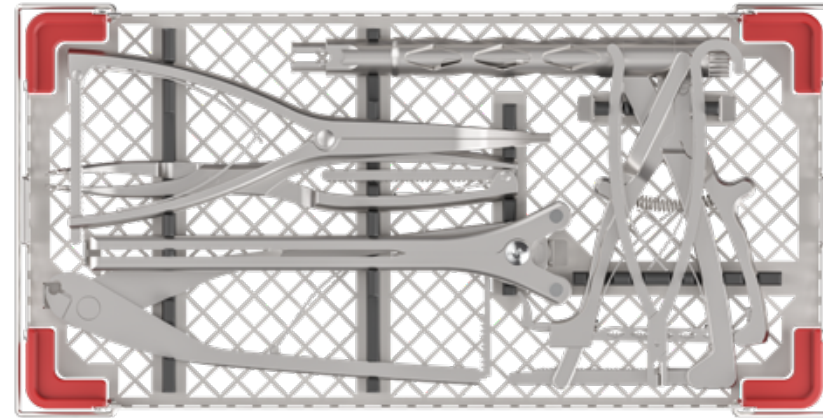
Standard tray contents. Individual tray and insert configuration with different instruments types, dimensions and handles available on request.

TRAY 2



ITEM-ID	DESCRIPTION
R12-HVK003	Screwdriver with square adapter 1/4" for polyaxial and monoaxial PD-screws, cannulated, dismountable
R13-IVK001	Screwdriver reposition with hex and square adapter 1/4"
R12-LVK001	Screwdriver with hex and square adapter 1/4"
R13-H00000-01	Screwdriver with torx and square adapter 1/4"
R13-ED20XX-P1	Rod pusher, straight with silicone handle
R13-LVK100-R1	Rod fork with square adapter 1/4"
R13-LD23XX-CT	Counter torque with silicone handle
R13-IH0R55-00	Hexagonal eye key (optional)
R13-ED20XX-P2	Rod pusher, curved with silicone handle (optional)
R13-ED20XX-R1	Rod fork (optional)
R13-LVK100-CT	Counter torque with square adapter 1/4" (optional)

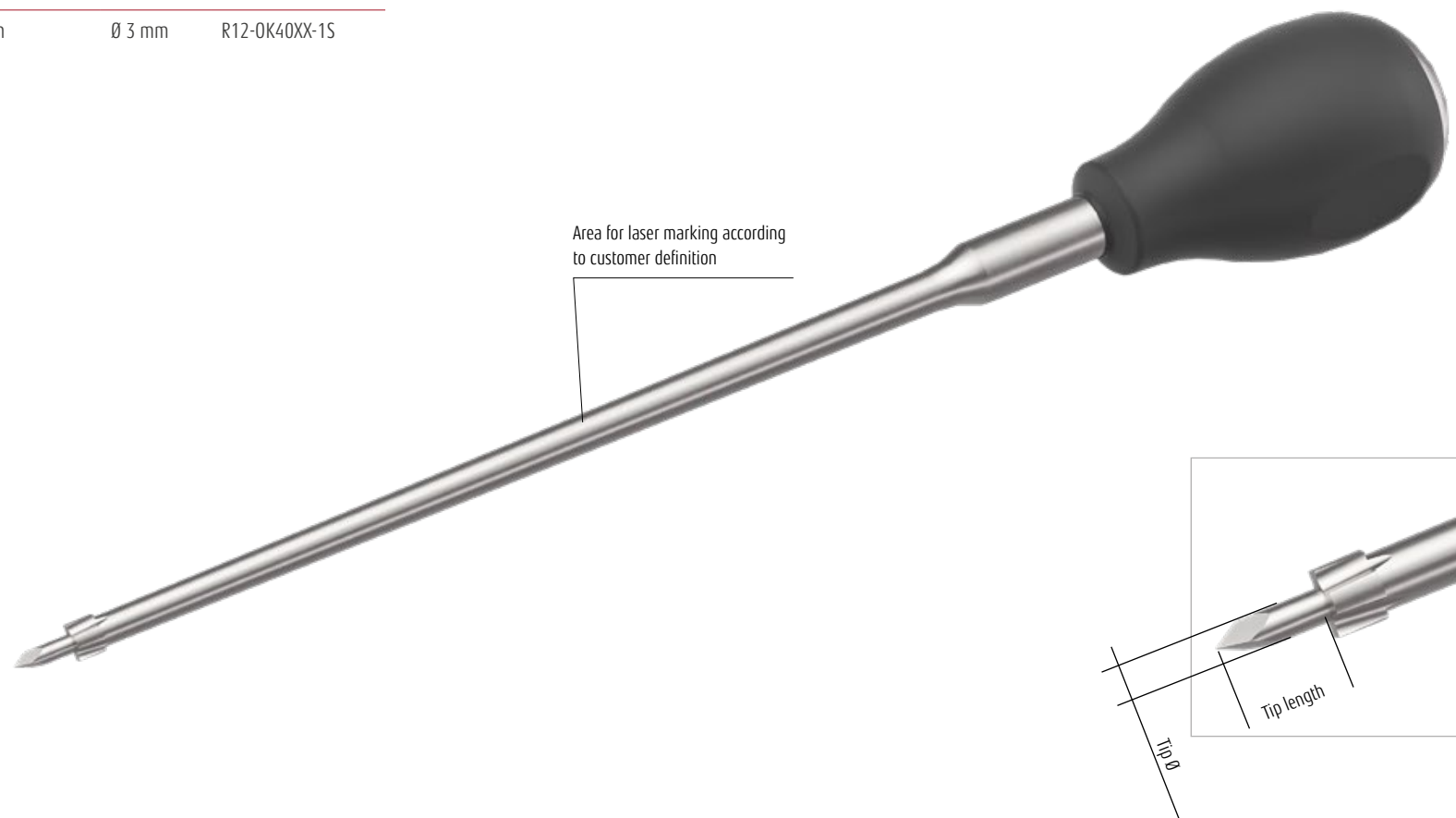
TRAY 3



ITEM-ID	DESCRIPTION
R13-IPH001-L1	Persuader L-form, dismountable
R13-PH2055-01	Reduction screw head breaker
R13-RH4000	Rod bender
R13-IH3S00	Rod holder, stable
R13-IH30xx-D1	Distractor forceps
R13-IH30xx-K1	Compressor forceps
R13-IPH001-S1	Persuader Straight-form, dismountable (optional)
R13-IPH001-T1	Persuader Tower-form, dismountable (optional)
R13-IH360xx-D2	Parallel-distractor forceps (optional)
R13-IH30xx-K2	Parallel compressor forceps (optional)
R13-ID23XX-Lx	Coronal bender, left (optional)
R13-ID23XX-Rx	Coronal bender, right (optional)
R13-IH0L00-xx	Insitu-bender, left (optional)
R13-IH0R00-xx	Insitu-bender, right (optional)

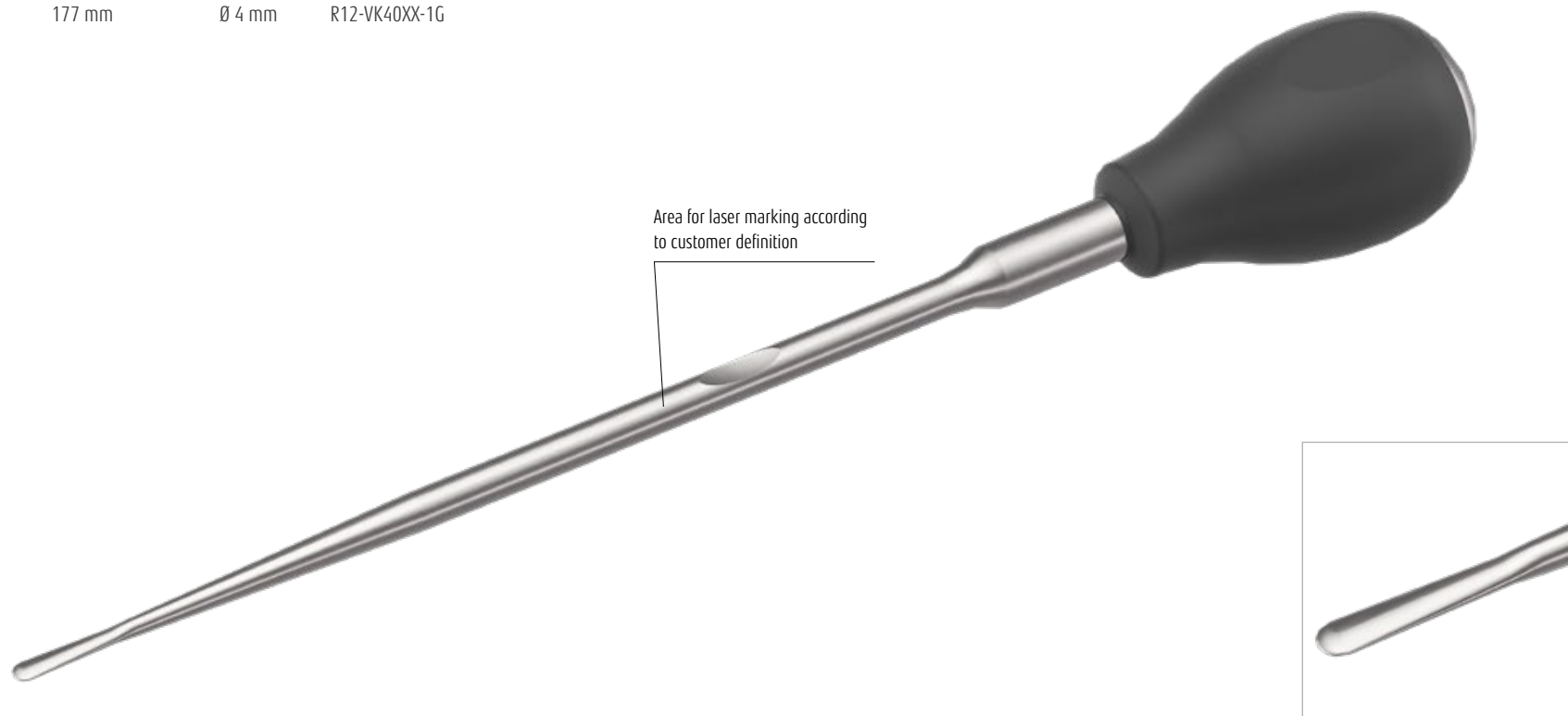
PEDICLE OPENER WITH STOP

TIP LENGTH	WORKING LENGTH	TIP	ITEM-ID
10 mm	177 mm	Ø 3 mm	R12-0K40XX-1S



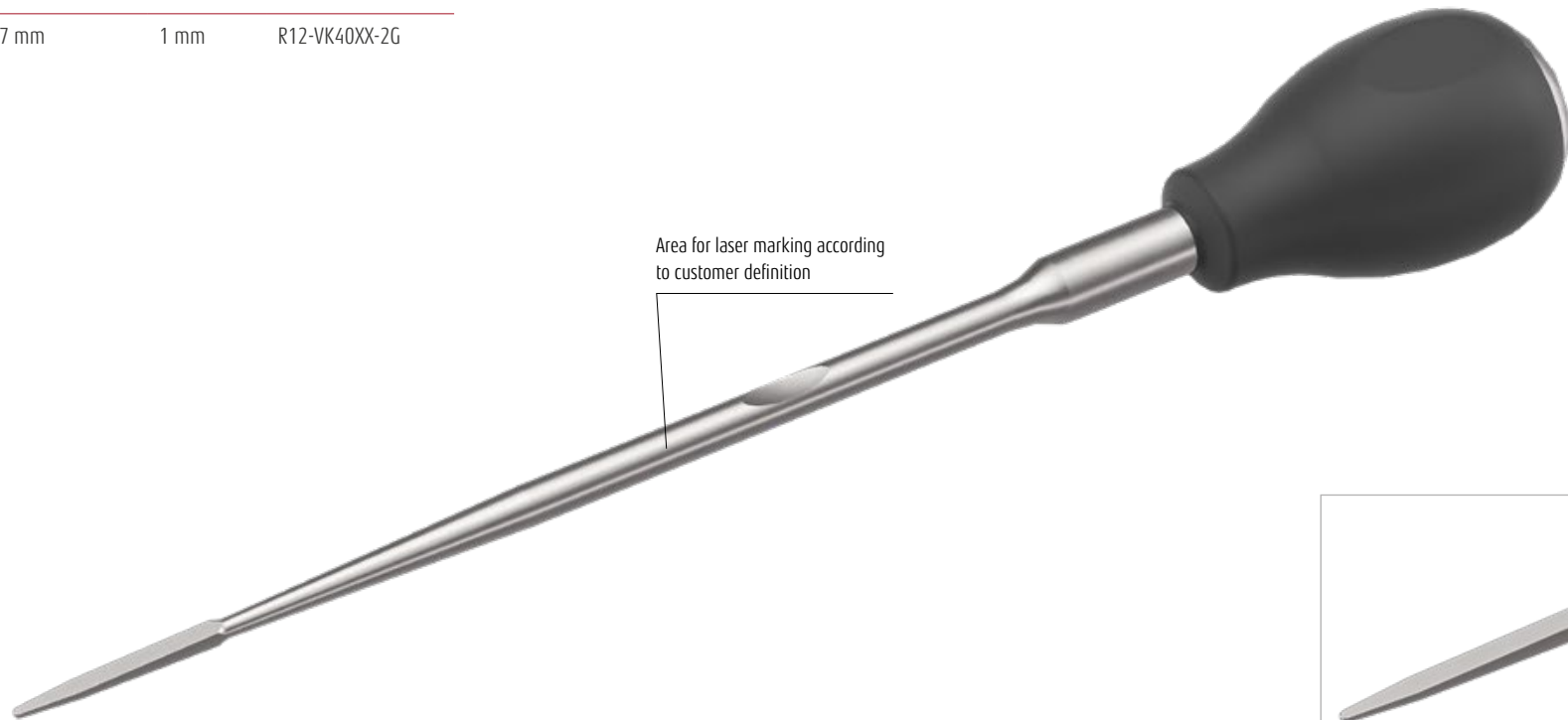
PEDICLE AWL STRAIGHT

TIP LENGTH	WORKING LENGTH	TIP	ITEM-ID
17 mm	177 mm	Ø 4 mm	R12-VK40XX-1G



PEDICLE AWL STRAIGHT, SMALL

TIP LENGTH	WORKING LENGTH	TIP	ITEM-ID
34 mm	177 mm	1 mm	R12-VK40XX-2G

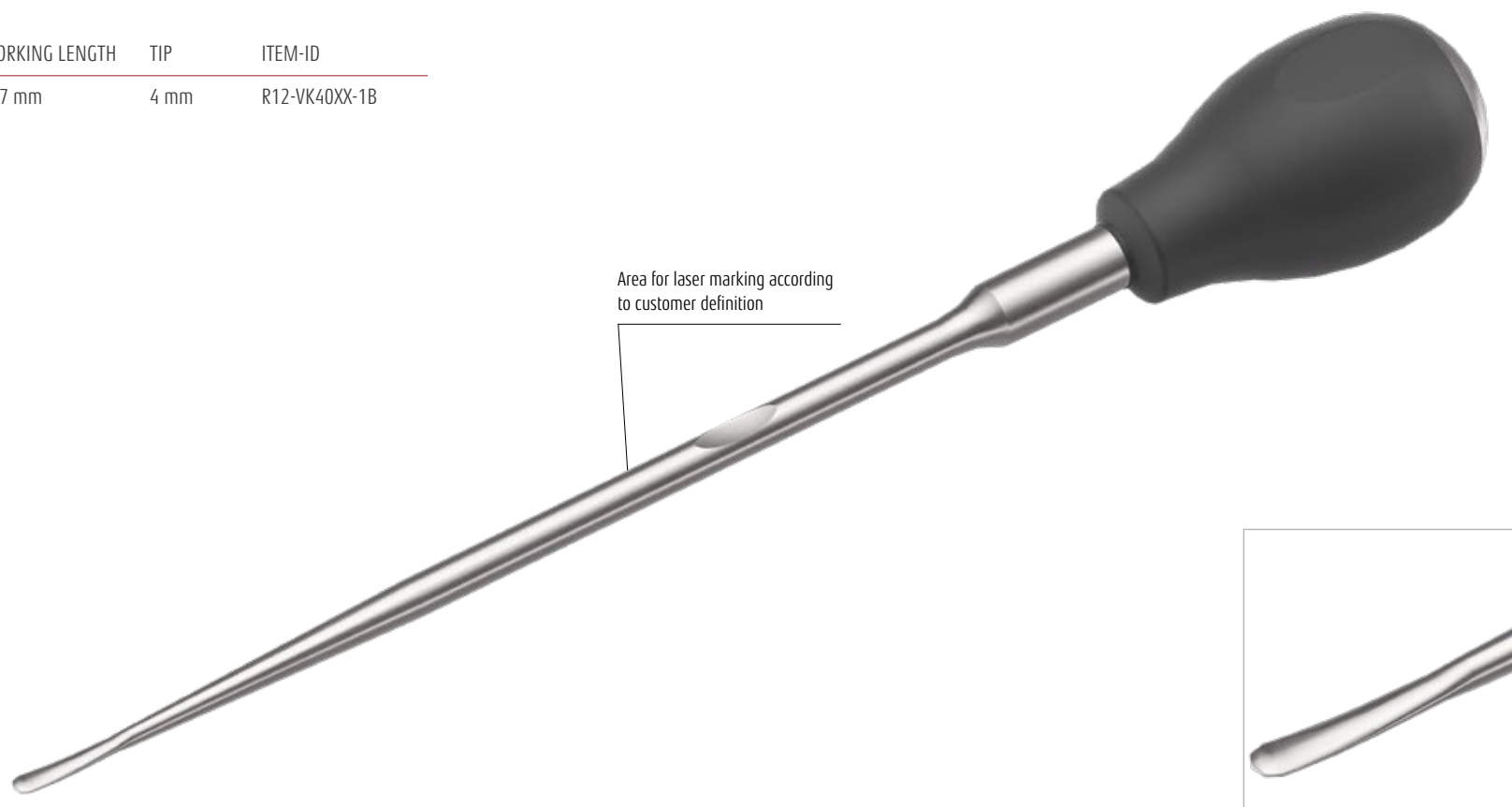


Area for laser marking according to customer definition



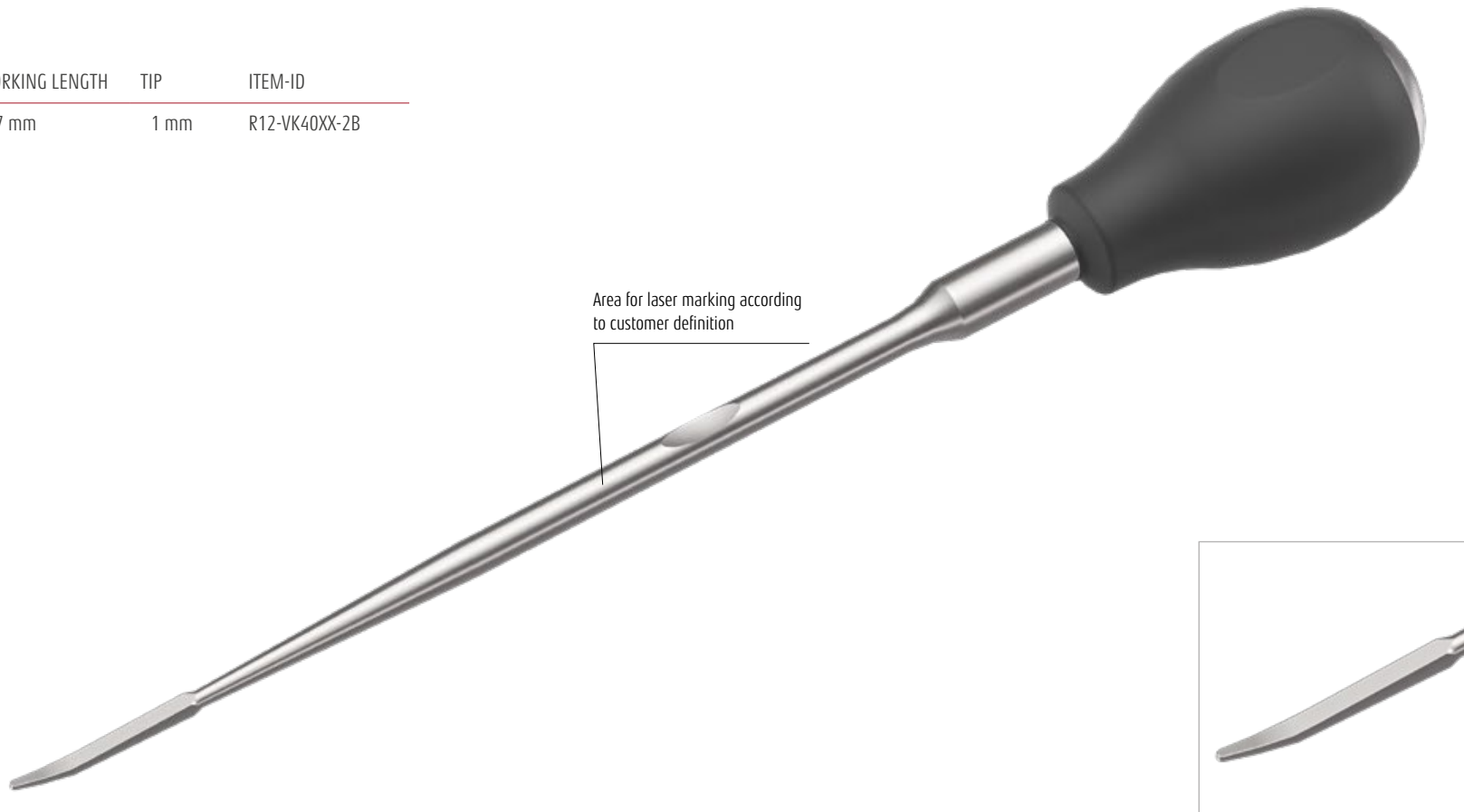
PEDICLE AWL CURVED

TIP LENGTH	WORKING LENGTH	TIP	ITEM-ID
20 mm	177 mm	4 mm	R12-VK40XX-1B



PEDICLE AWL CURVED, SMALL

TIP LENGTH	WORKING LENGTH	TIP	ITEM-ID
34 mm	177 mm	1 mm	R12-VK40XX-2B



PEDICLE AWL STRAIGHT, CANNULATED WITH TROKAR

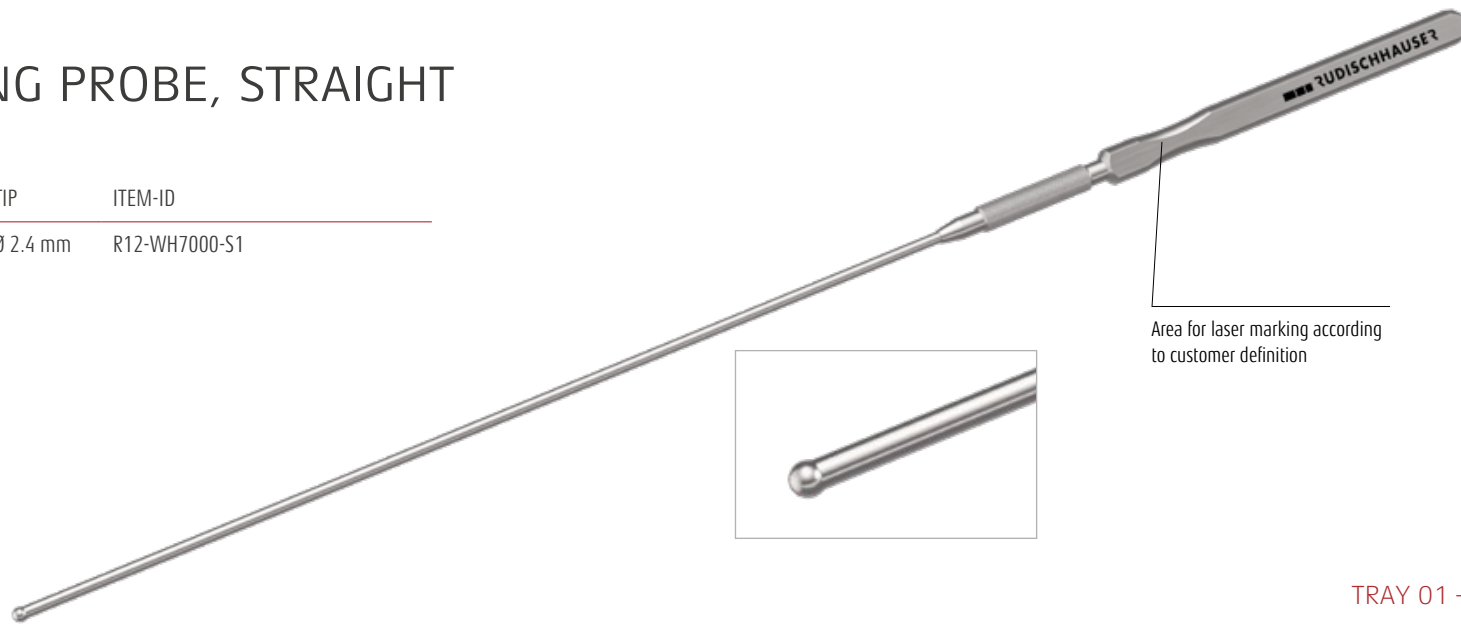
TIP LENGTH	WORKING LENGTH	TIP	ITEM-ID
19 mm	178.5 mm	Ø 6 mm	R12-VK40XX-1T



TRAY 01

SOUNDING PROBE, STRAIGHT

WORKING LENGTH	TIP	ITEM-ID
167 mm	Ø 2.4 mm	R12-WH7000-S1



TRAY 01 – OPTIONAL

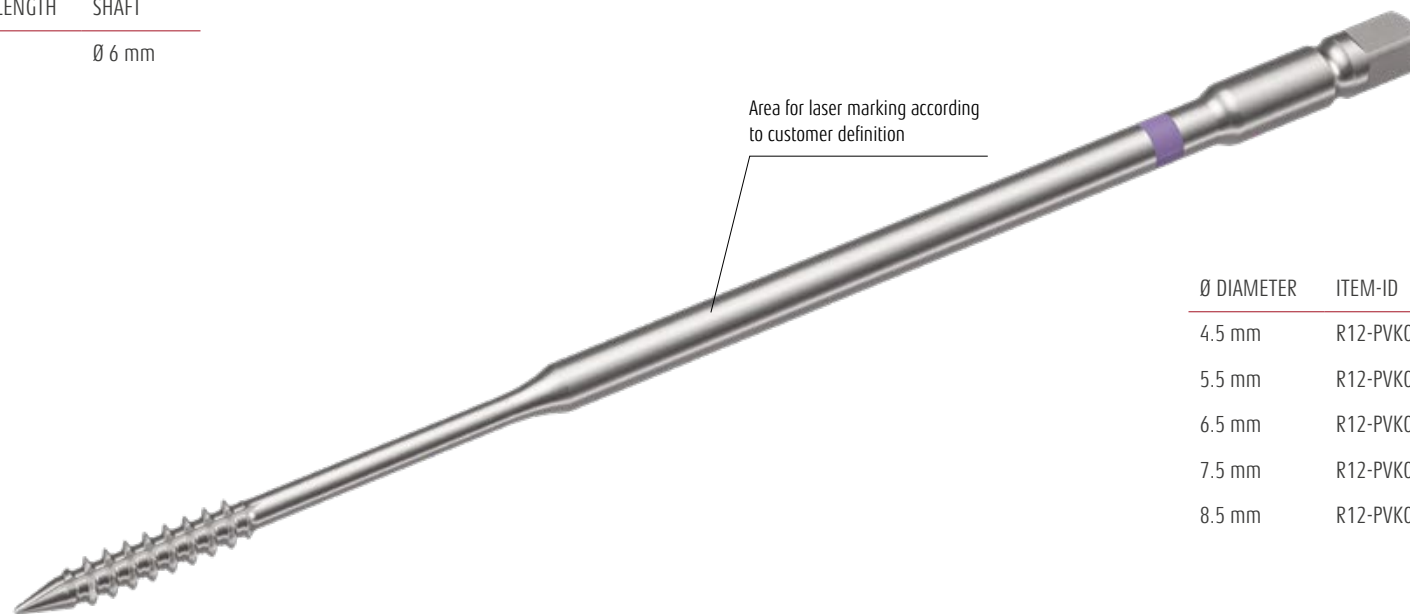
SOUNDING PROBE, CURVED

WORKING LENGTH	TIP	ITEM-ID
167 mm	Ø 2.4 mm	R12-WH7000-C1

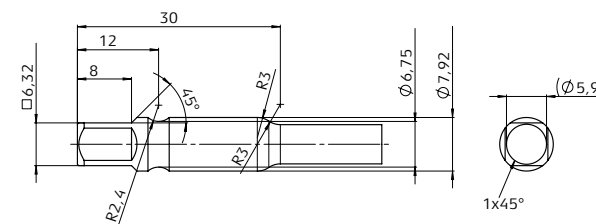


THREAD CUTTER WITH SQUARE ADAPTER 1/4"

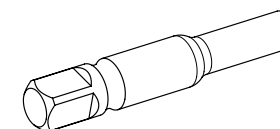
THREAD LENGTH	WORKING LENGTH	SHAFT
30 mm	160 mm	Ø 6 mm



Ø DIAMETER	ITEM-ID
4.5 mm	R12-PVK000-45
5.5 mm	R12-PVK000-55
6.5 mm	R12-PVK000-65
7.5 mm	R12-PVK000-75
8.5 mm	R12-PVK000-85

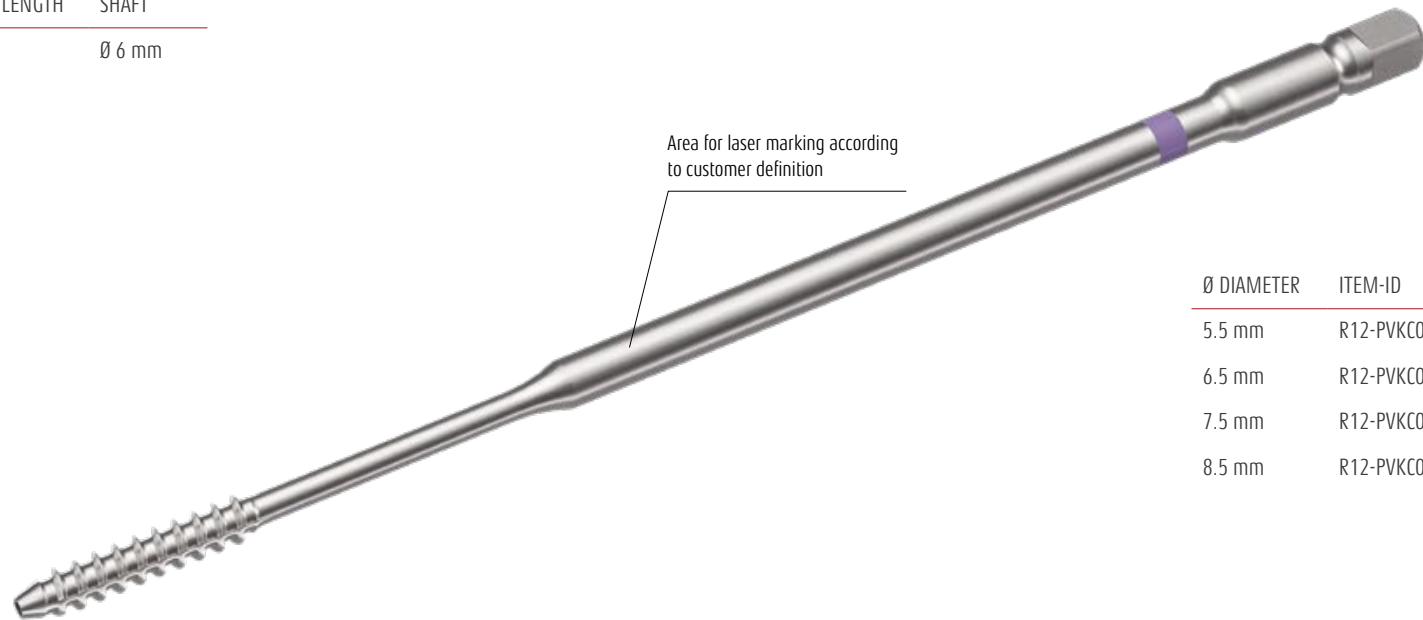


Other coupling types available on request

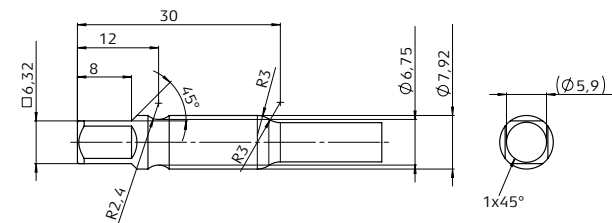


THREAD CUTTER, CANNULATED WITH SQUARE ADAPTER 1/4"

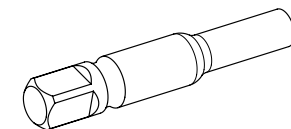
THREAD LENGTH	WORKING LENGTH	SHAFT
30 mm	160 mm	Ø 6 mm



Ø DIAMETER	ITEM-ID
5.5 mm	R12-PVKC00-55
6.5 mm	R12-PVKC00-65
7.5 mm	R12-PVKC00-75
8.5 mm	R12-PVKC00-85

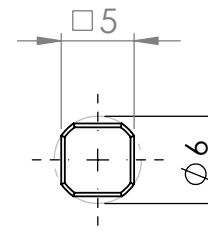


Other coupling types available on request



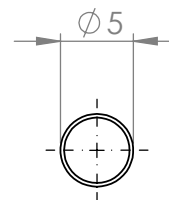
GUIDE PIN, A- AND B-TYPE

LENGTH	WORKING LENGTH	TIP
45 mm	40 mm	Ø 3 mm



Ø DIAMETER	ITEM-ID
3.5 mm	R12-Q00040-PR

Area for laser marking according to customer definition



Ø DIAMETER	ITEM-ID
3.5 mm	R12-Q00040-PL

TEMPLATES IN SILICONE

LENGTH	MATERIAL	ITEM-ID	Ø DIAMETER
100 mm	Stainless steel / silicone	R12-U100XX-0E	on request
120 mm	Stainless steel / silicone	R12-U120XX-0E	on request
200 mm	Stainless steel / silicone	R12-U200XX-0E	on request
300 mm	Stainless steel / silicone	R12-U300XX-0E	on request
400 mm	Stainless steel / silicone	R12-U100XX-0E	on request
500 mm	Stainless steel / silicone	R12-U100XX-0E	on request
100 mm	Nitinol / silicone	R12-U100XX-0N	on request
120 mm	Nitinol / silicone	R12-U120XX-0N	on request
200 mm	Nitinol / silicone	R12-U200XX-0N	on request
300 mm	Nitinol / silicone	R12-U300XX-0N	on request
400 mm	Nitinol / silicone	R12-U100XX-0N	on request
500 mm	Nitinol / silicone	R12-U100XX-0N	on request



AVAILABLE COLORS

COLOR	COLOR	COLOR	COLOR
01		RAL 1016	sulfur yellow
02		RAL 1006	maize yellow
03		RAL 2004	pure orange
04		RAL 3000	flame red
05		RAL 6010	grass green
06		RAL 5015	sky blue
07		RAL 5002	ultramarine blue
08		RAL 5010	gentian blue
09		RAL 7031	blue grey
10		RAL 9005	jet black
11		RAL 4008	signal violet
12		RAL 3001	signal red
13		RAL 1107077	neon green
14		RAL 7036	grey
15		Stainless steel	
16		PPSU	

COLOR CODES

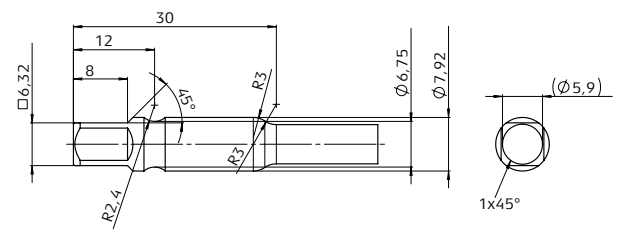
The **XX** in the item number must be replaced with the corresponding color code, e.g. 04 for flame red color.

SCREWDRIVER WITH SQUARE ADAPTER 1/4" FOR POLYAXIAL AND MONOAXIAL PD-SCREWS, CANNULATED, DISMOUNTABLE

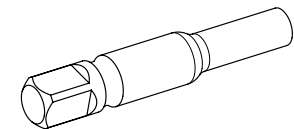
LENGTH	TIP	ITEM-ID
265.8 mm	can be customized	R12-HVK003-PO Polyaxial Screw
265.8 mm	can be customized	R12-HVK003-MO Monoaxial Screw



Can be customized according to specific screw design



Other coupling types available on request



See page 45–47 for handle details and specifications | Available colors for silicone handles, page 45

ROD CALIPER, 30 – 130 MM

LENGTH	ITEM-ID
270 mm	R12-U00000-C1



RODHOLDER, SMALL

LENGTH	ROD DIAMETER	ITEM-ID
200 mm	Ø 5.5 mm	R13-HH8000-55
200 mm	Ø 6 mm	R13-HH8000-60

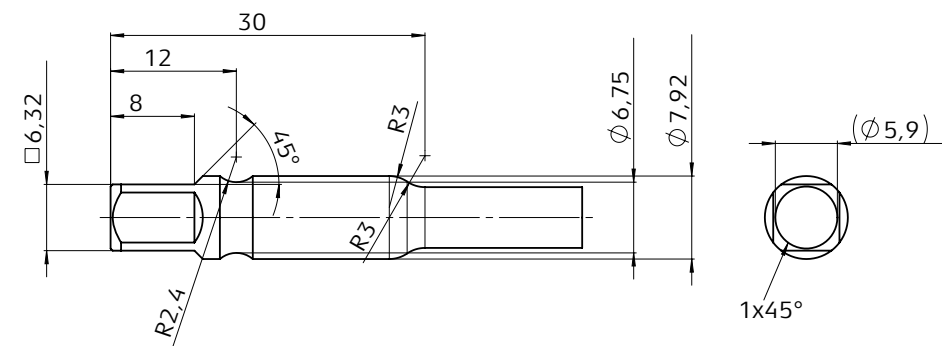


T-QUICK CHANGE RATCHED HANDLE WITH 1/4" CONNECTOR, CANNULATED

WIDTH	HEIGHT	ITEM-ID
116 mm	104 mm	R21-HT23XX-B3

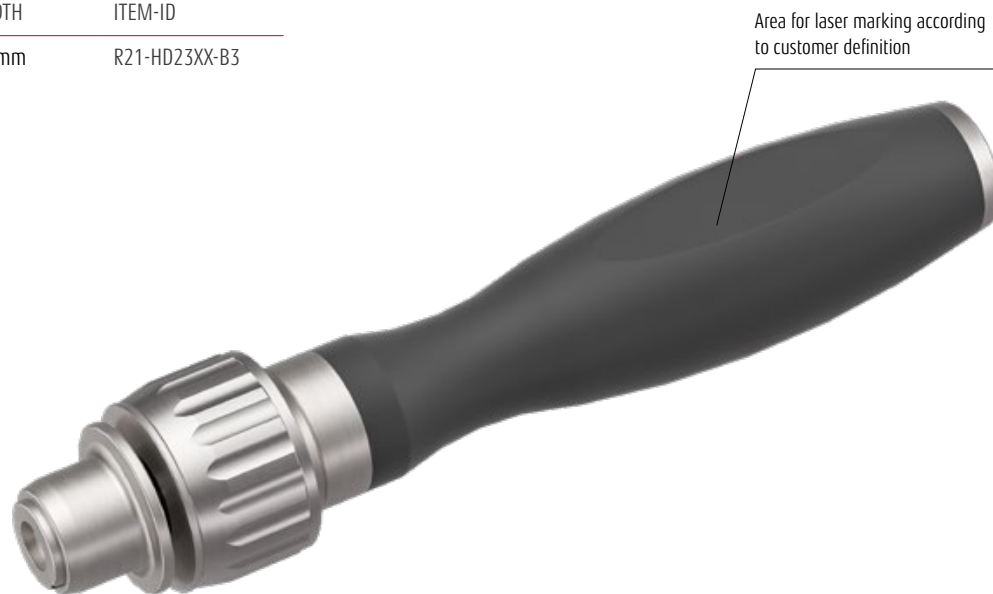


MEASURES COUNTERPART

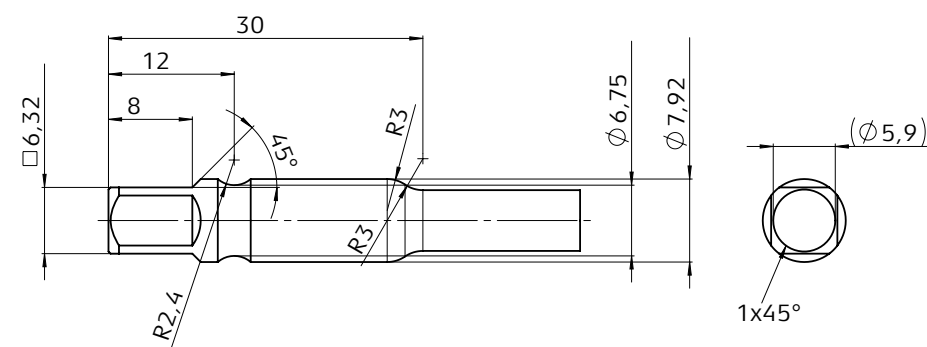


STRAIGHT-QUICK CHANGE RATCHED HANDLE WITH ¼" CONNECTOR, CANNULATED

LENGTH	WIDTH	ITEM-ID
165 mm	32 mm	R21-HD23XX-B3



MEASURES COUNTERPART



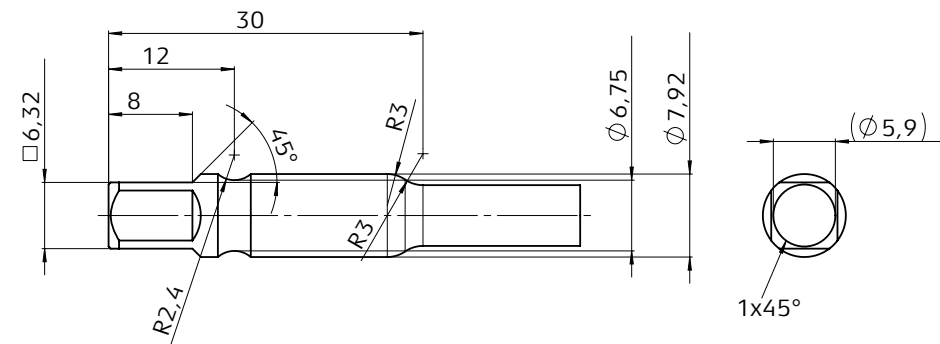
T-TORQUE QUICK CHANGE HANDLE 12NM WITH 1/4" CONNECTOR

HEIGHT	WIDTH	ITEM-ID
116 mm	140.5 mm	R13-LT23XX-12



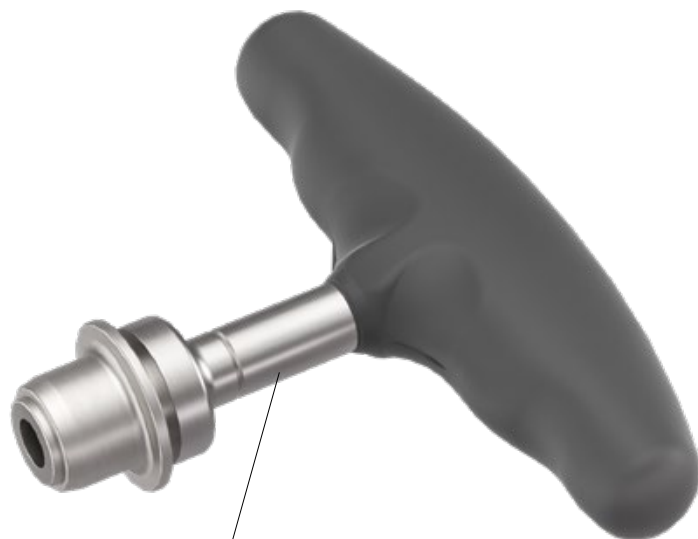
Area for laser marking according to customer definition

MEASURES COUNTERPART



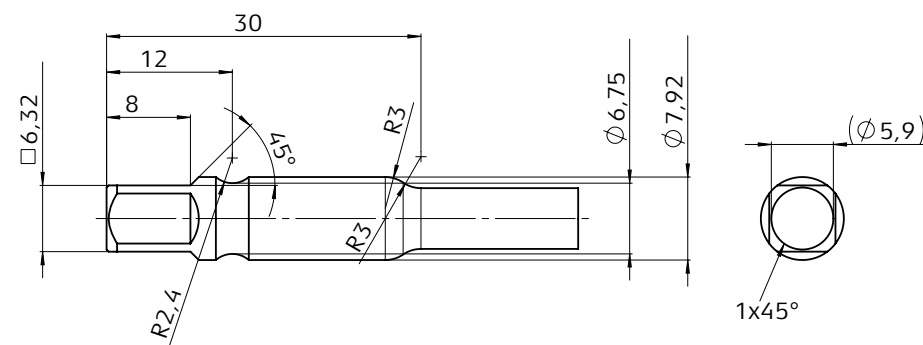
T-QUICK CHANGE HANDLE WITH ¼" CONNECTOR, CANNULATED

HEIGHT	WIDTH	ITEM-ID
99mm	140.5 mm	R21-HT23XX-A3



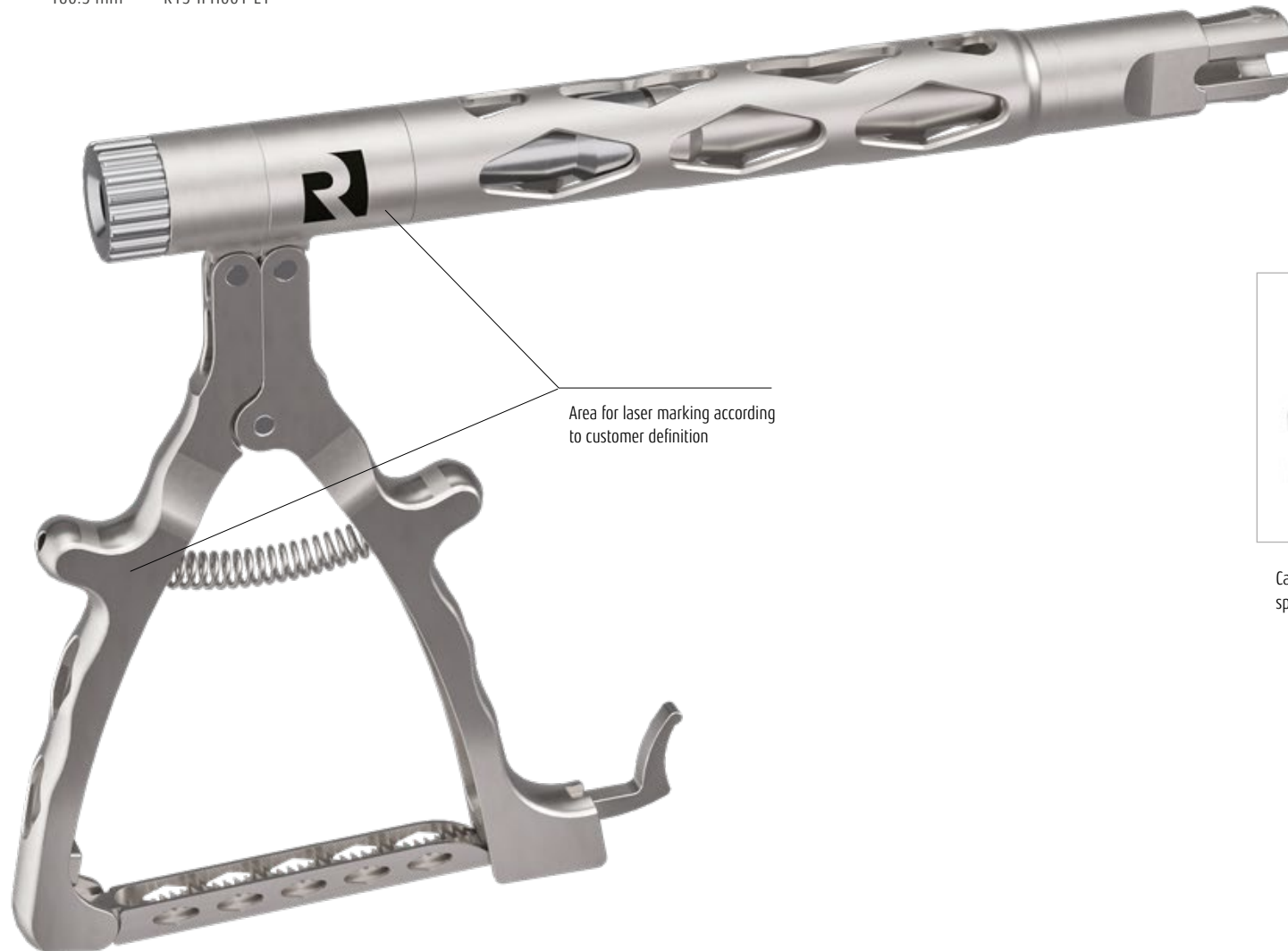
Area for laser marking according
to customer definition

MEASURES COUNTERPART



PERSUADER L-FORM, DISMOUNTABLE

LENGTH	HEIGHT	ITEM-ID
255 mm	180.5 mm	R13-IPH001-L1



Area for laser marking according to customer definition



Can be customized according to specific screw design

PERSUADER STRAIGHT-FORM, DISMOUNTABLE

LENGTH	WIDTH	ITEM-ID
344.6 mm	156.7 mm	R13-IPH001-S1



Area for laser marking according to customer definition



Can be customized according to specific screw design

PERSUADER TOWER-FORM, DISMOUNTABLE

LENGTH	ITEM-ID
175 mm	R13-IPH001-T1



Area for laser marking according to customer definition

Can be customized according to specific screw design

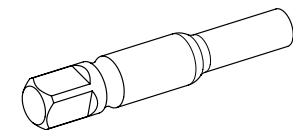
SCREWDRIVER REPOSITION WITH HEX/TORX AND SQUARE ADAPTER 1/4"

LENGTH	TIP	ITEM-ID
190 mm	can be customized	R13-IVK001-A7 – hex
190 mm	can be customized	R13-IVK001-A6 – torx



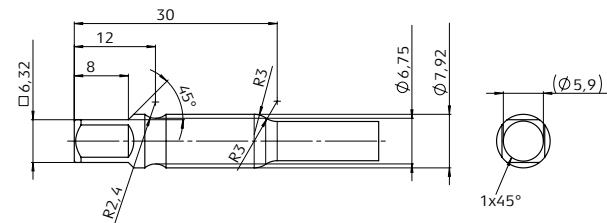
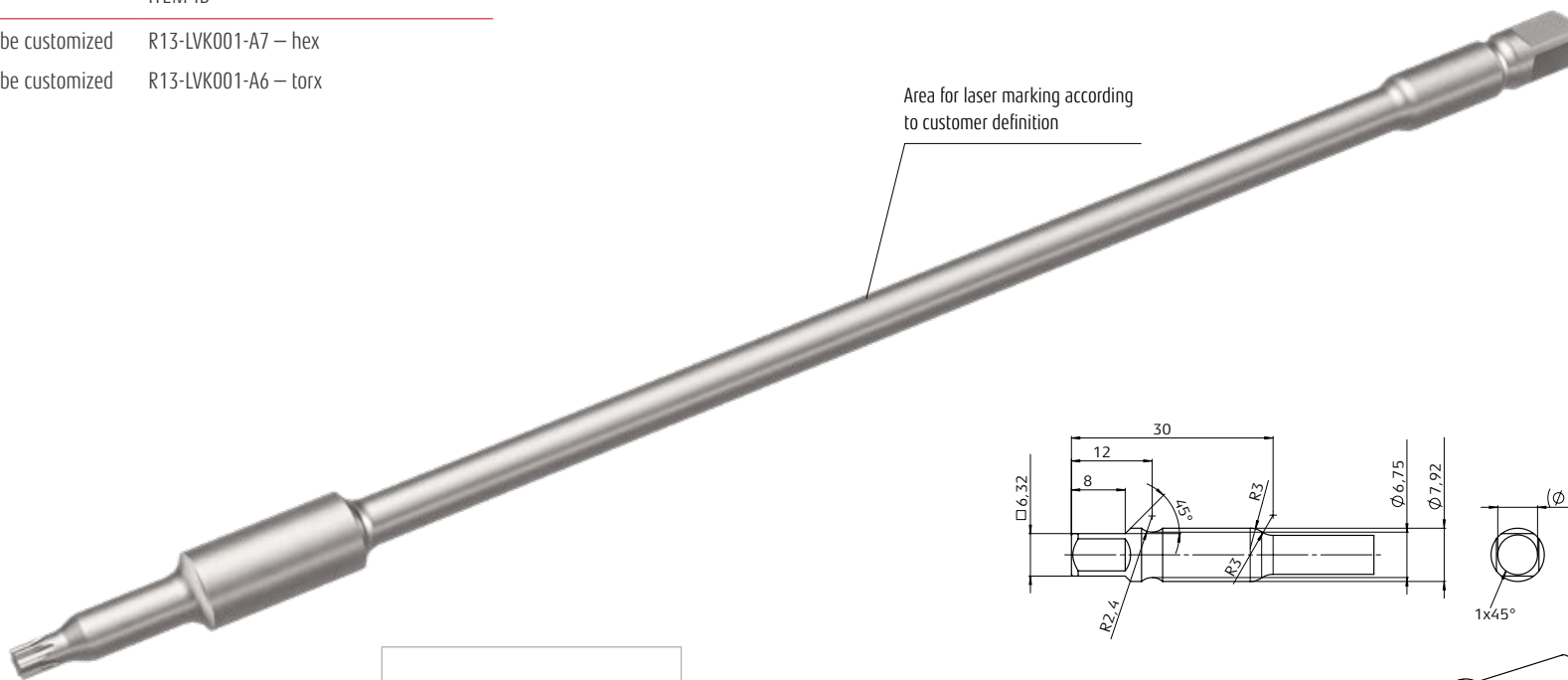
Can be customized according to specific screw design

Other coupling types available on request



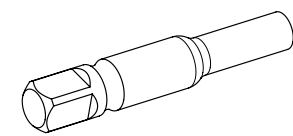
SCREWDRIVER WITH HEX/TORX AND SQUARE ADAPTER 1/4"

LENGTH	TIP	ITEM-ID
226 mm	can be customized	R13-LVK001-A7 – hex
226 mm	can be customized	R13-LVK001-A6 – torx



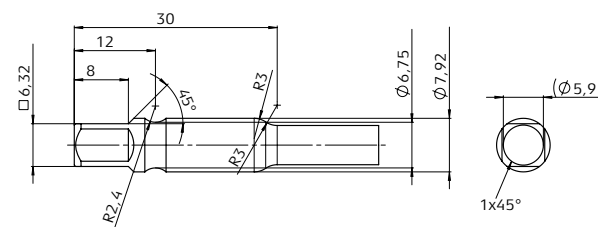
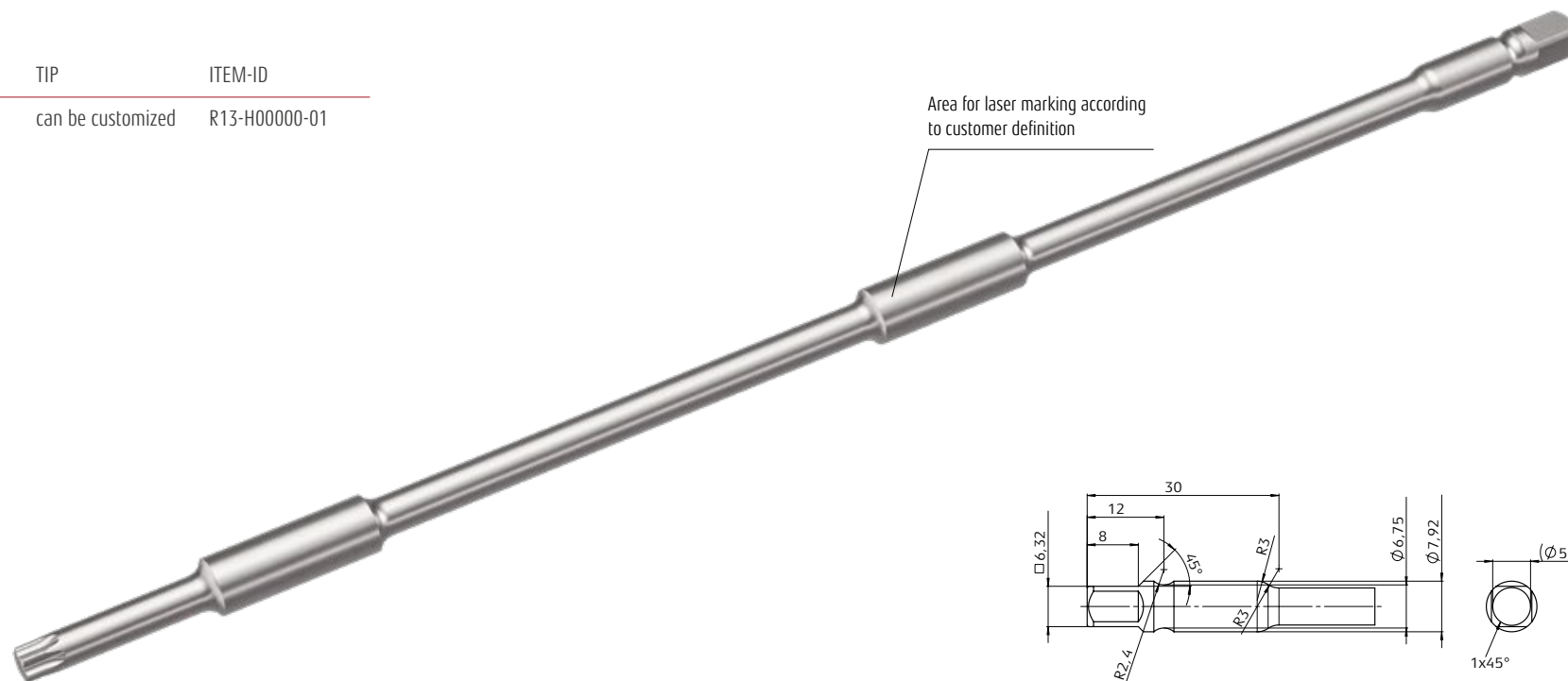
Can be customized according to specific screw design

Other coupling types available on request

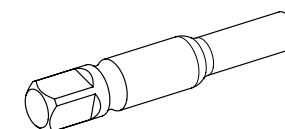


NUTHOLDER WITH TORX AND SQUARE ADAPTER 1/4"

LENGTH	TIP	ITEM-ID
270 mm	can be customized	R13-H00000-01



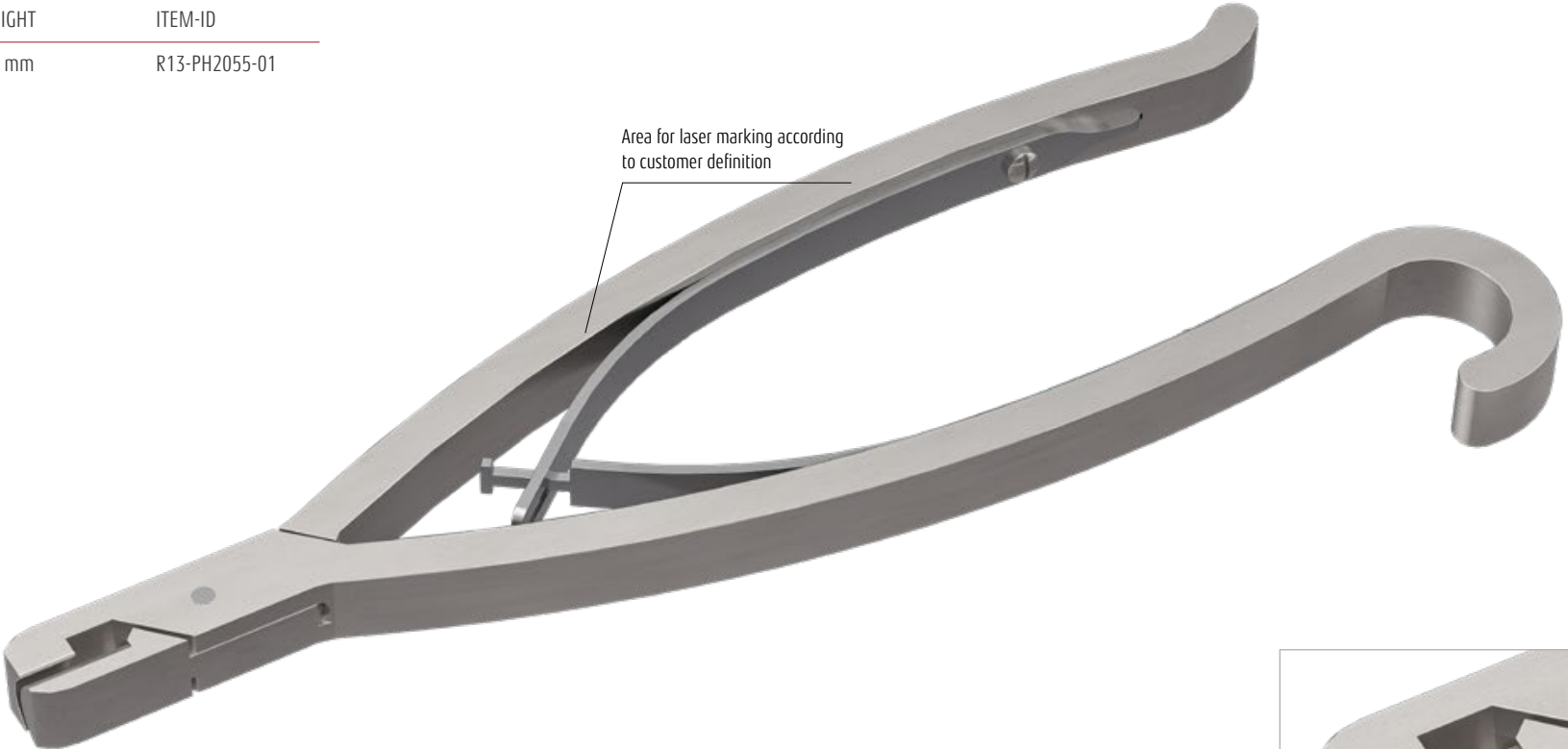
Other coupling types available on request



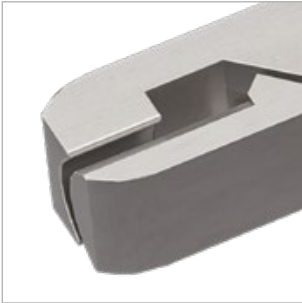
Can be customized according to specific screw design

REDUCTION SCREW HEAD BREAKER

LENGTH	HEIGHT	ITEM-ID
203 mm	80 mm	R13-PH2055-01



Area for laser marking according to customer definition

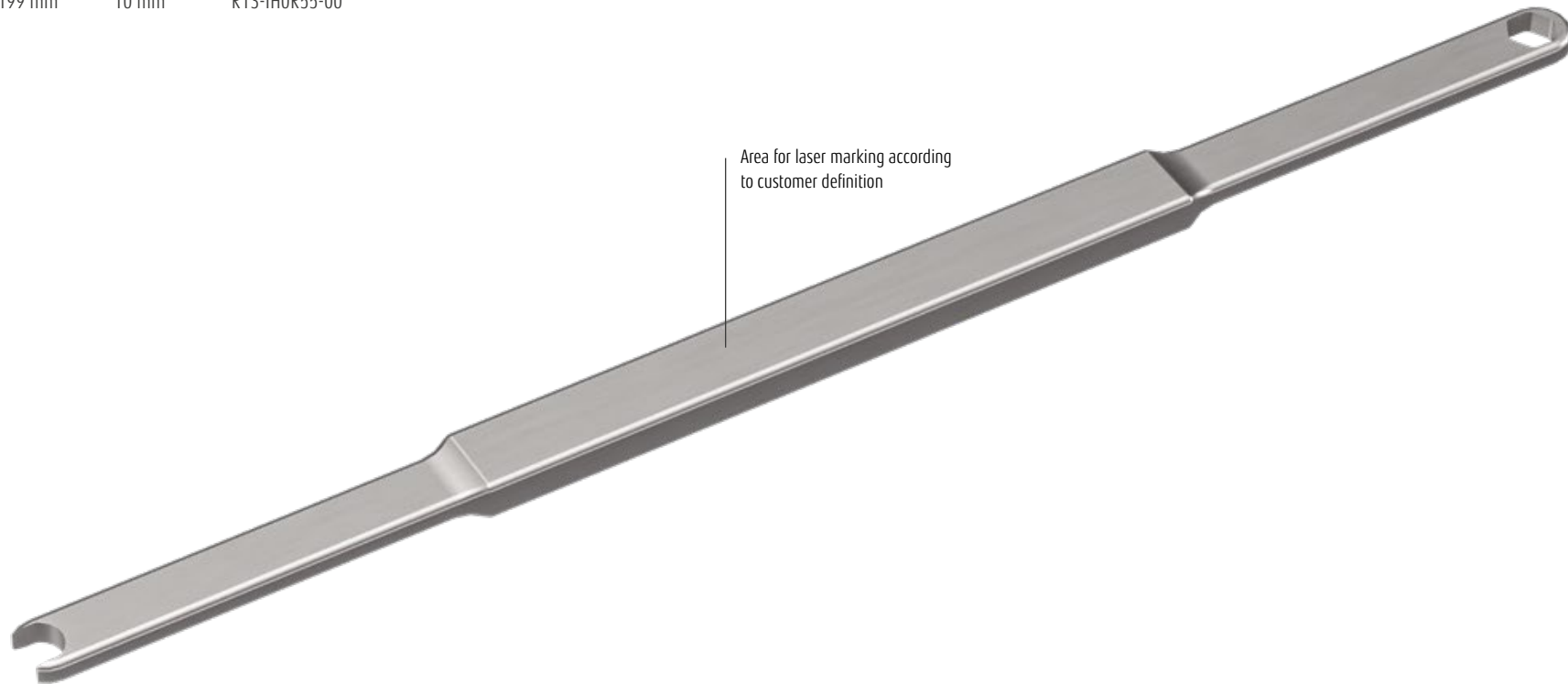


Can be customized according to specific screw design



HEXAGONAL EYE KEY

LENGTH	HEIGHT	ITEM-ID
199 mm	10 mm	R13-IHOR55-00



Can be customized according to specific screw design

ROD PUSHER, STRAIGHT WITH SILICONE HANDLE

LENGTH	WORKING LENGTH	ITEM-ID
270 mm	151 mm	R13-ED20XX-P1

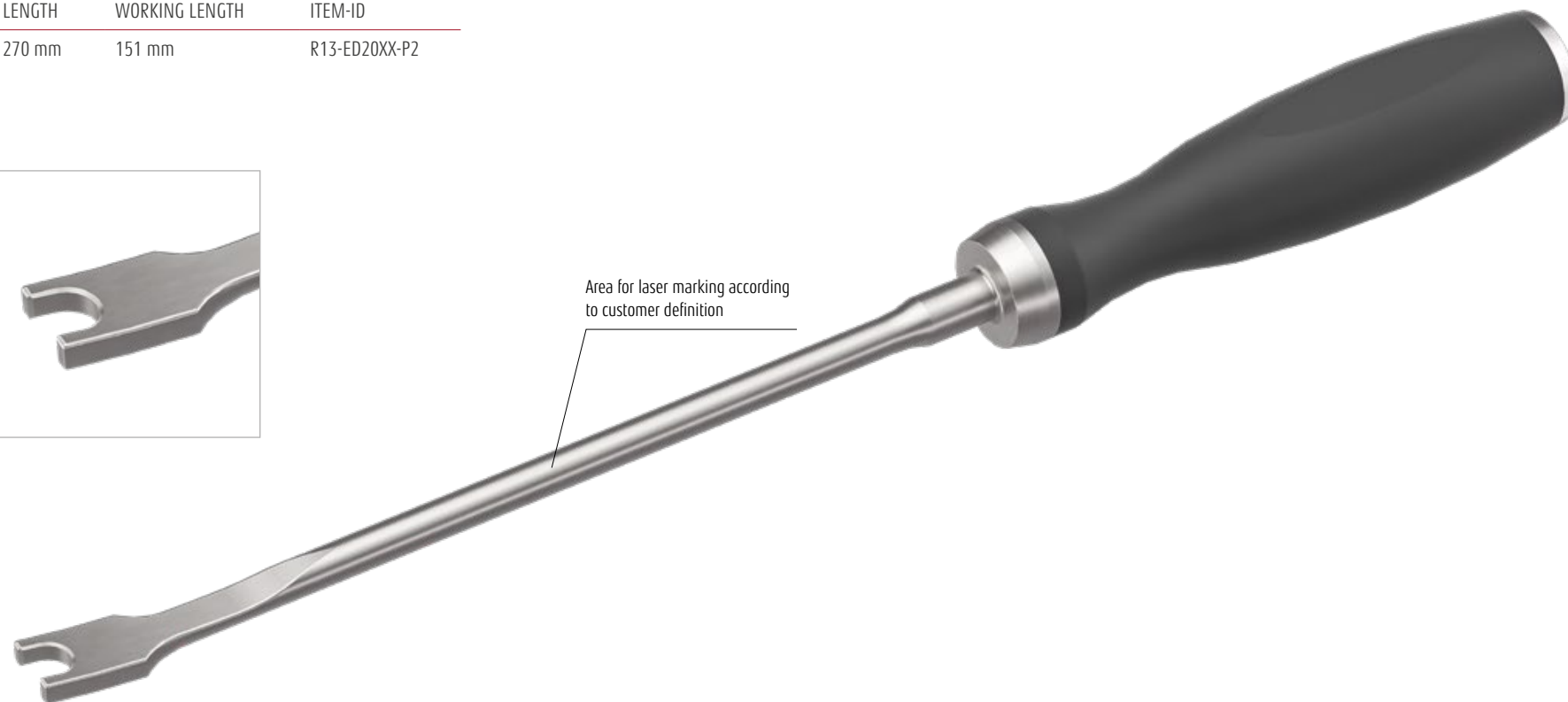


Area for laser marking according
to customer definition



ROD PUSHER, CURVED WITH SILICONE HANDLE

LENGTH	WORKING LENGTH	ITEM-ID
270 mm	151 mm	R13-ED20XX-P2



Area for laser marking according to customer definition

ROD FORK

LENGTH	WORKING LENGTH	ITEM-ID
270 mm	156 mm	R13-ED20XX-P2



Area for laser marking according to customer definition

ROD FORK WITH SQUARE ADAPTER 1/4"

LENGTH	ITEM-ID
198.5 mm	R13-LVK100-R1

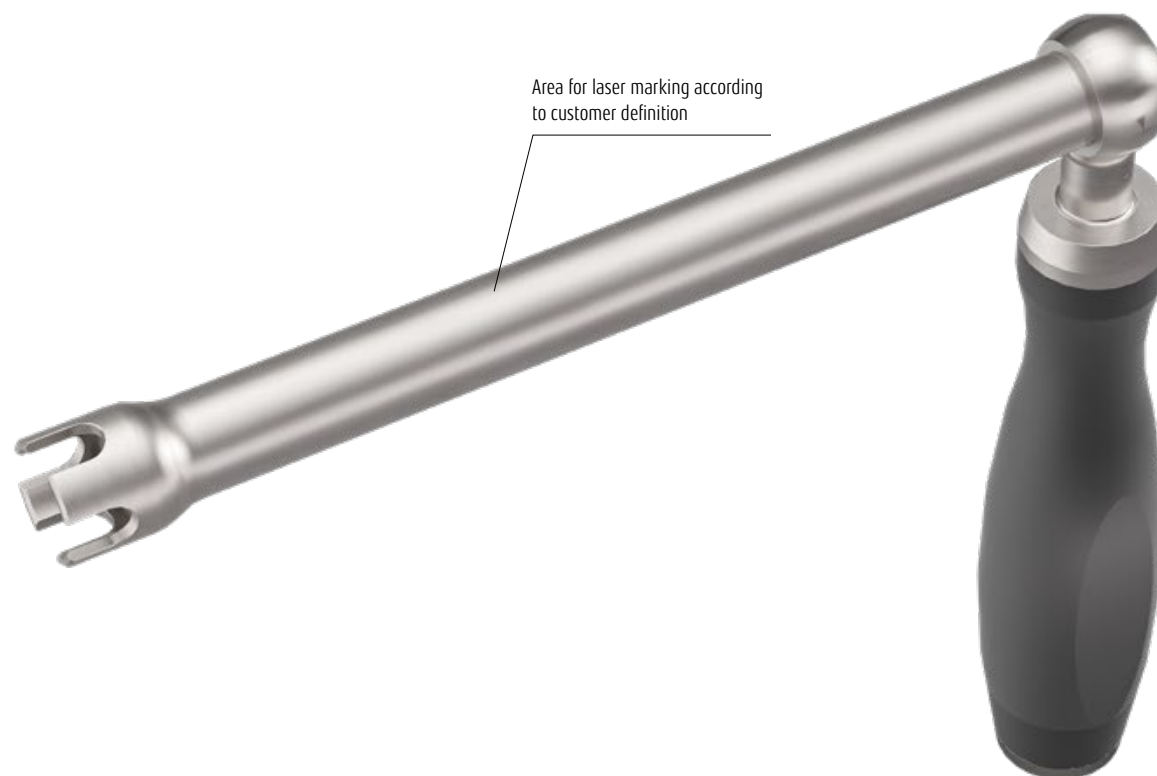


COUNTER TORQUE WITH SILICONE HANDLE

LENGTH	HEIGHT	ITEM-ID
180 mm	158 mm	R13-LD23XX-CT



Can be customized according to specific screw design

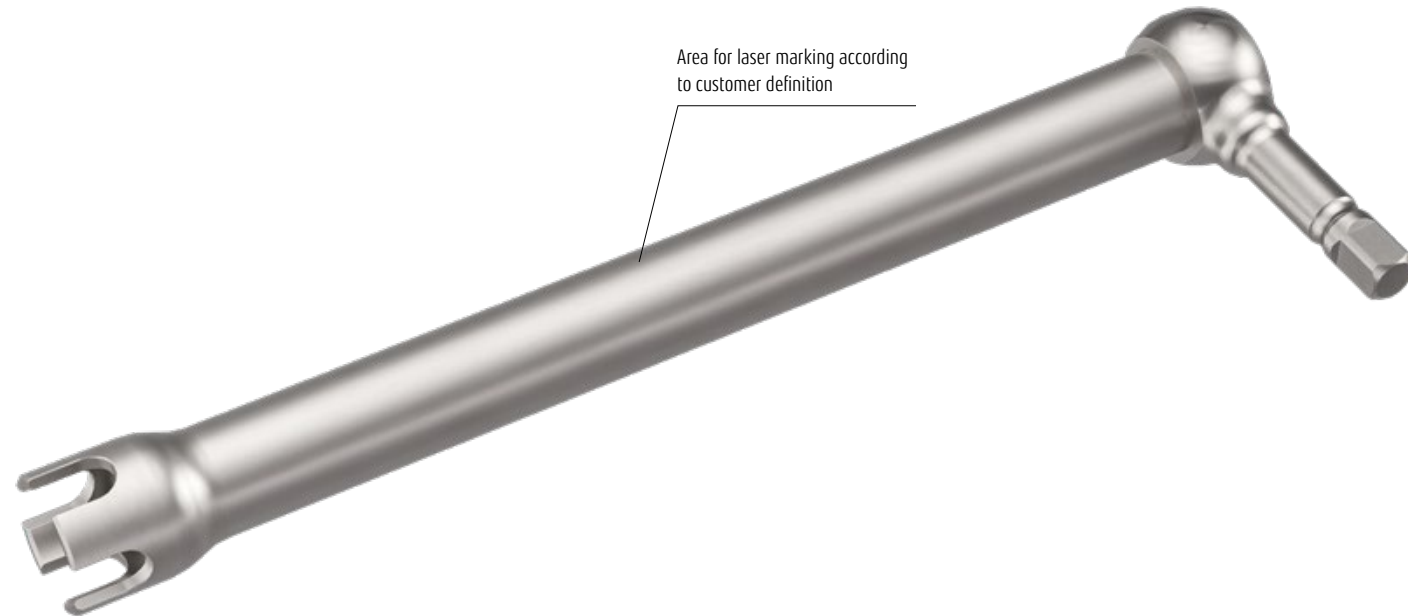


COUNTER TORQUE WITH SQUARE ADAPTER 1/4"

LENGTH	HEIGHT	ITEM-ID
180 mm	56 mm	R13-LVK100-CT



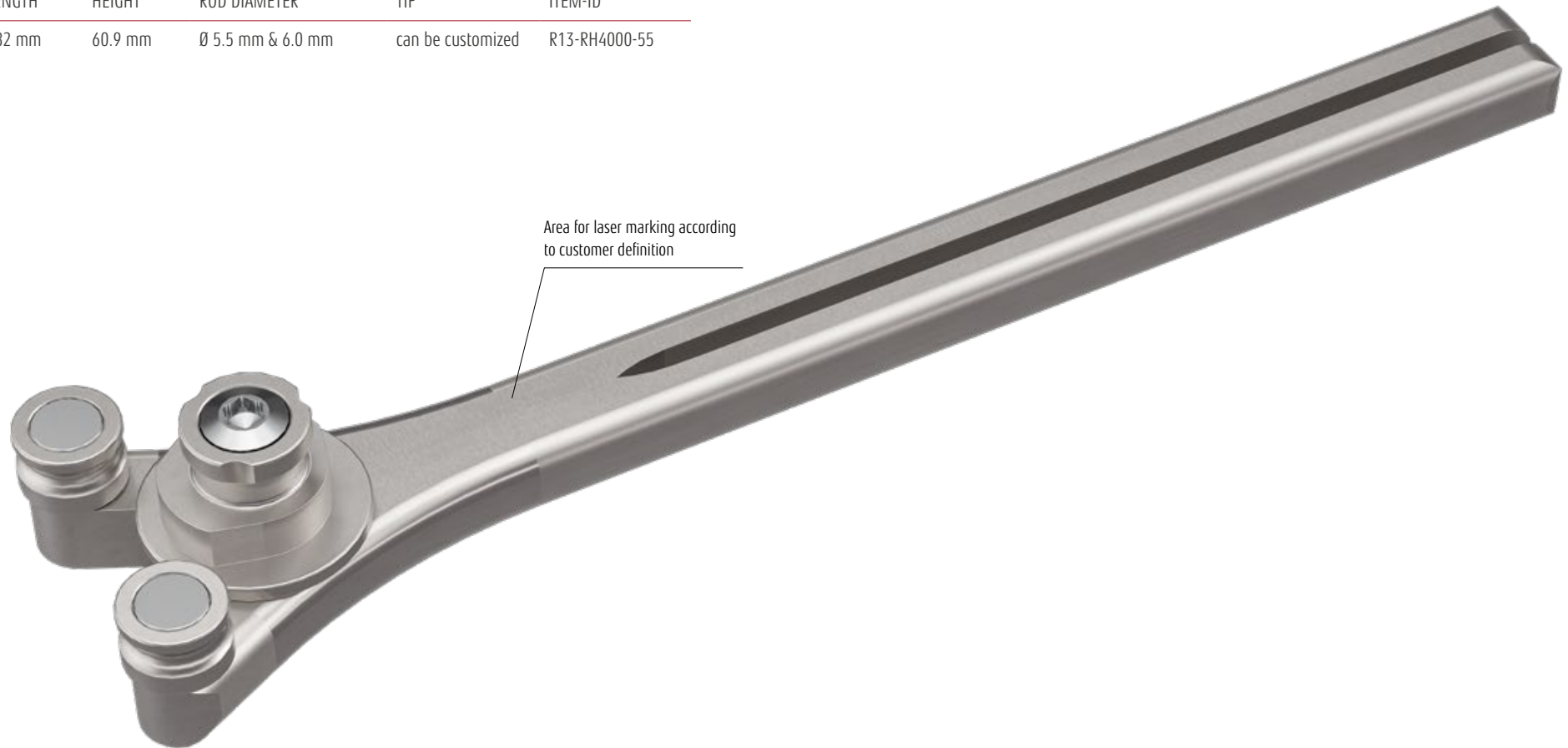
Can be customized according to specific screw design



Area for laser marking according to customer definition

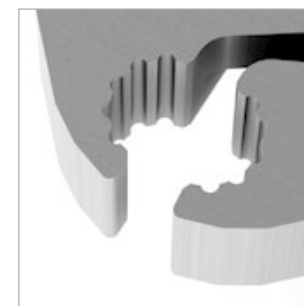
ROD BENDER

LENGTH	HEIGHT	ROD DIAMETER	TIP	ITEM-ID
282 mm	60.9 mm	Ø 5.5 mm & 6.0 mm	can be customized	R13-RH4000-55



ROD HOLDER, STABLE

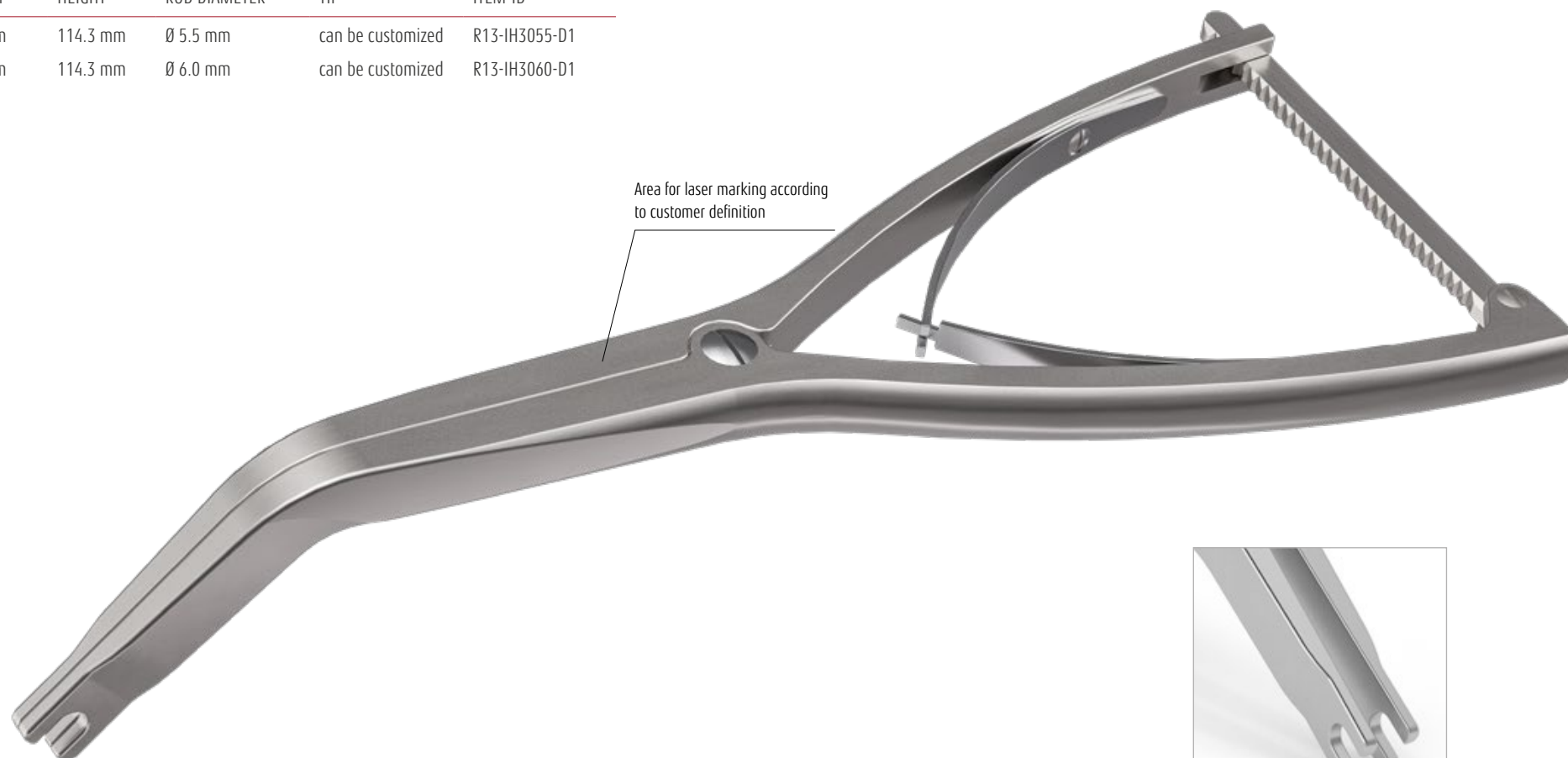
LENGTH	HEIGHT	ROD DIAMETER	TIP	ITEM-ID
271.5 mm	94.5 mm	Ø 5.5 mm	can be customized	R13-IH3S00-55
271.5 mm	94.5 mm	Ø 6.0 mm	can be customized	R13-IH3S00-60



Can be customized according to specific rod design

DISTRACTOR FORCEPS

LENGTH	HEIGHT	ROD DIAMETER	TIP	ITEM-ID
280 mm	114.3 mm	Ø 5.5 mm	can be customized	R13-IH3055-D1
280 mm	114.3 mm	Ø 6.0 mm	can be customized	R13-IH3060-D1



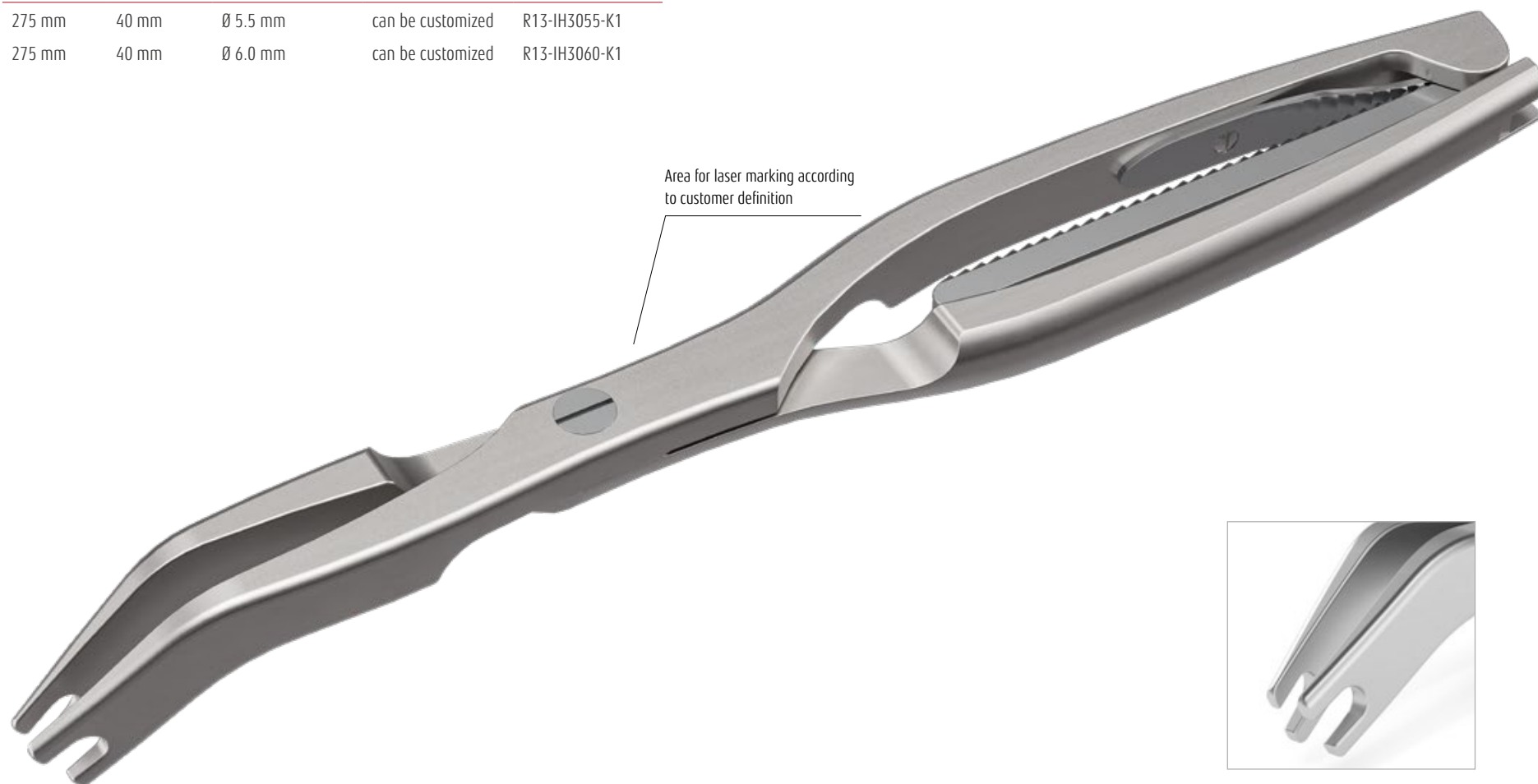
Area for laser marking according to customer definition



Can be customized according to specific screw design

COMPRESSOR FORCEPS

LENGTH	HEIGHT	ROD DIAMETER	TIP	ITEM-ID
275 mm	40 mm	Ø 5.5 mm	can be customized	R13-IH3055-K1
275 mm	40 mm	Ø 6.0 mm	can be customized	R13-IH3060-K1



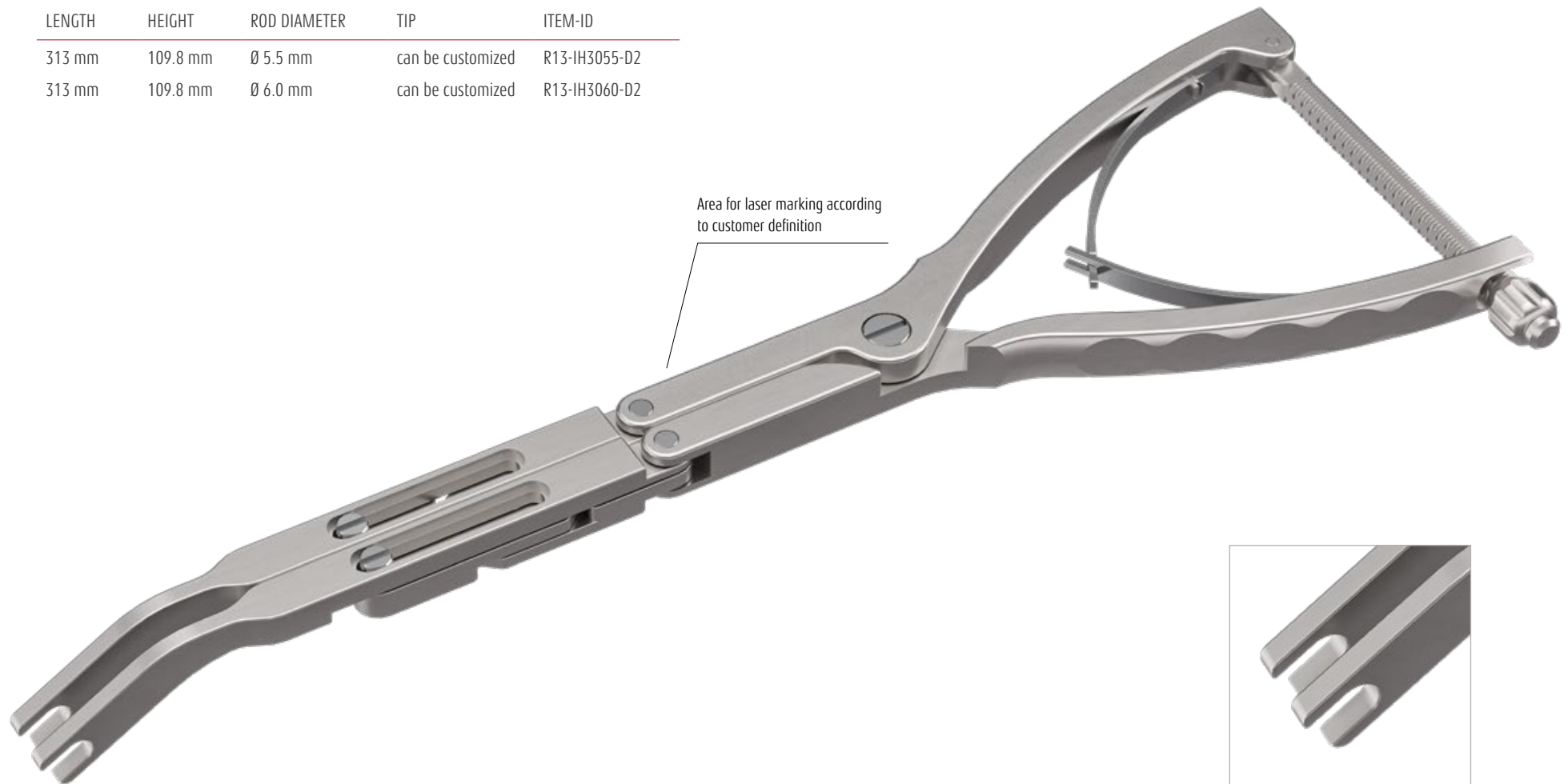
Area for laser marking according
to customer definition



Can be customized according to
specific screw design

PARALLEL-DISTRACTOR FORCEPS

LENGTH	HEIGHT	ROD DIAMETER	TIP	ITEM-ID
313 mm	109.8 mm	Ø 5.5 mm	can be customized	R13-IH3055-D2
313 mm	109.8 mm	Ø 6.0 mm	can be customized	R13-IH3060-D2



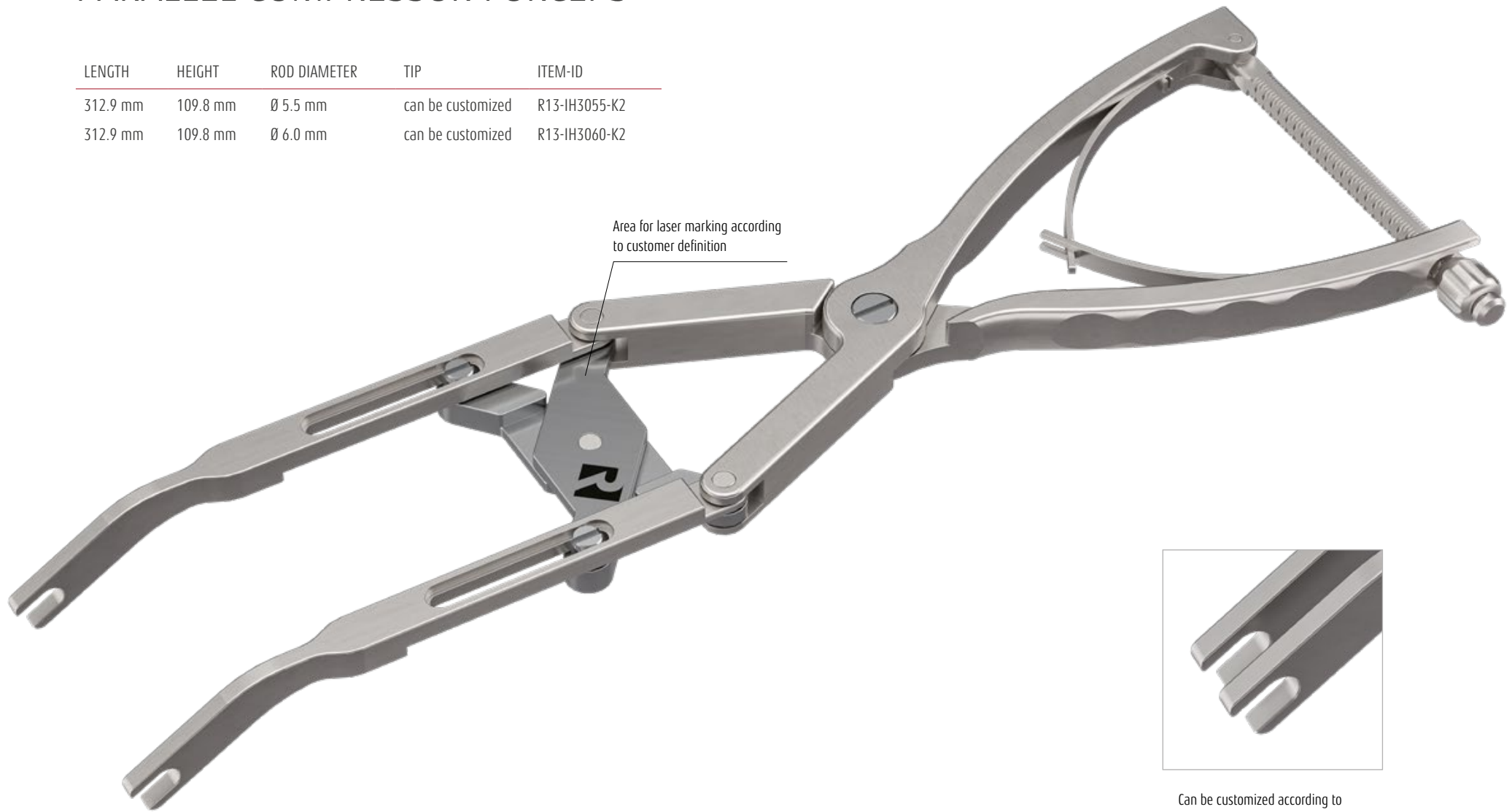
Area for laser marking according to customer definition



Can be customized according to specific screw design

PARALLEL-COMPRESSOR FORCEPS

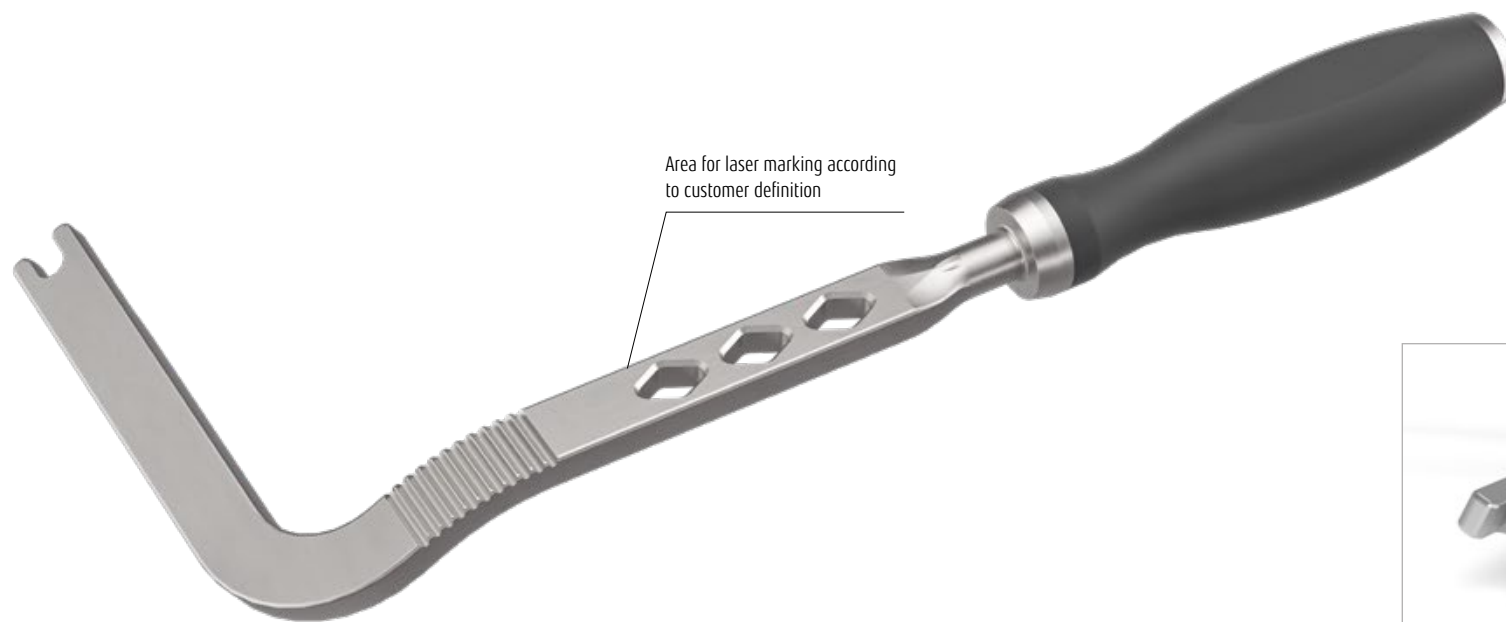
LENGTH	HEIGHT	ROD DIAMETER	TIP	ITEM-ID
312.9 mm	109.8 mm	Ø 5.5 mm	can be customized	R13-IH3055-K2
312.9 mm	109.8 mm	Ø 6.0 mm	can be customized	R13-IH3060-K2



Area for laser marking according to customer definition



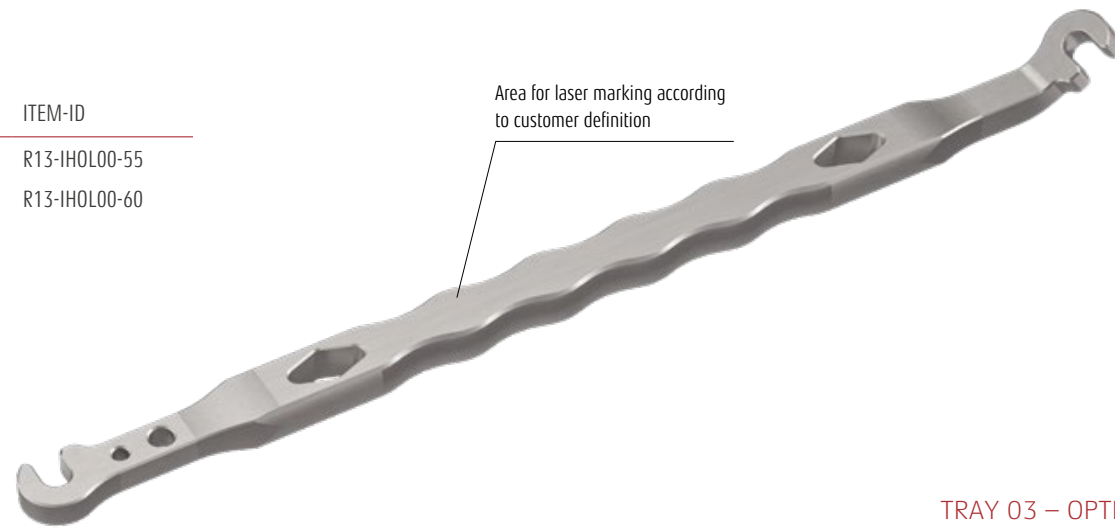
Can be customized according to specific screw design





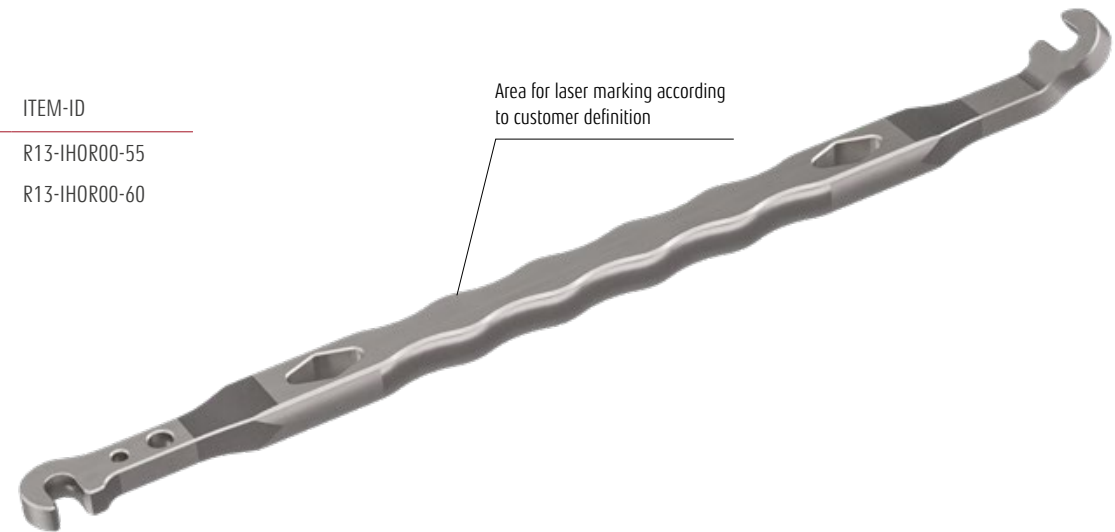
INSITU-BENDER, LEFT

LENGTH	HEIGHT	ROD DIAMETER	TIP	ITEM-ID
290 mm	20.5 mm	Ø 5.5 mm	can be customized	R13-IHOL00-55
290 mm	20.5 mm	Ø 6.0 mm	can be customized	R13-IHOL00-60



INSITU-BENDER, RIGHT

LENGTH	HEIGHT	ROD DIAMETER	TIP	ITEM-ID
290 mm	20.5 mm	Ø 5.5 mm	can be customized	R13-IHOR00-55
290 mm	20.5 mm	Ø 6.0 mm	can be customized	R13-IHOR00-60



Can be customized according to specific screw design

HANDLES

SILICONE HANDLES

AVAILABLE COLORS

SINGLE COLOR	BICOLOR CODE	COLOR		
01	A		RAL 1016	sulfur yellow
02	B		RAL 1006	maize yellow
03	C		RAL 2004	pure orange
04	D		RAL 3000	flame red
05	E		RAL 6010	grass green
06	F		RAL 5015	sky blue
07	G		RAL 5002	ultramarine blue
08	H		RAL 5010	gentian blue
09	I		RAL 7031	blue grey
10	J		RAL 9005	jet black
11	K		RAL 4008	signal violet
12	L		RAL 3001	signal red
13	M		RAL 1107077	neon green
14	N		RAL 7036	grey
15	O		Stainless steel	
16	P		PPSU	

COLOR CODES

The **XX** in the item number must be replaced with the corresponding color code, e.g. 04 for single red color.

Bicolor handles have a two letter code, e.g. RXX-1XXX**FB**-XX, for double color handle in blue/orange, where the first letter specifies main color, second letter for spot color.

All materials are conform to regulatory requirements.

Handle area for customization with own logo or text

Soft touch silicone, gapless injection molded – no contamination

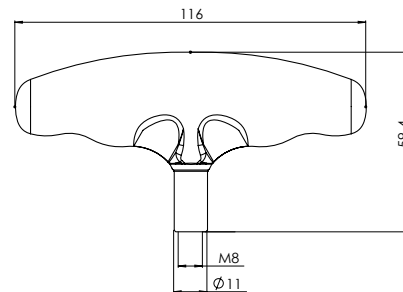
High quality, brushed stainless steel



T-HANDLES

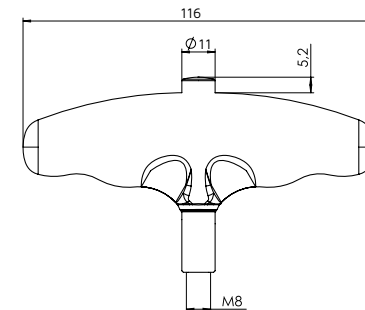
T23-116-M8 [STANDARD] (10.540)

silicone length: 116 mm
height: 59 mm



T23-116-M8-SC (15.810)

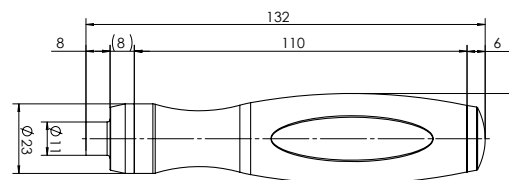
silicone length: 116 mm
height: 64,5 mm



STRAIGHT HANDLES

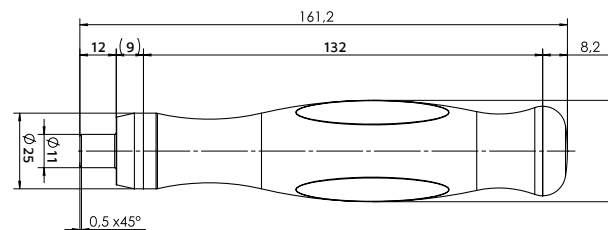
D23-110-M8
(10.491)

silicone length: 110 mm
overall length: 132 mm



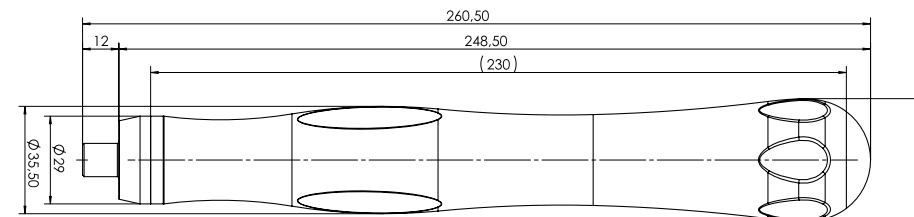
D25-132-M8
(12.420)

silicone length: 132 mm
overall length: 161.2 mm



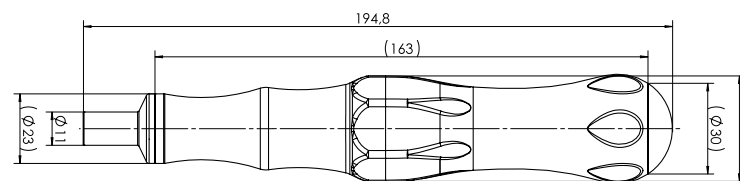
D29-230-M8
(14.460)

silicone length: 230 mm
overall length: 260.5 mm



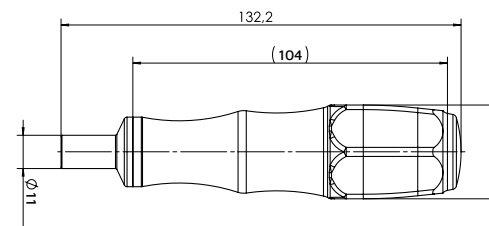
E23-163-M8
(16.895)

silicone length: 163 mm
overall length: 194.8 mm



E23-104-M8
(16.890)

silicone length: 104 mm
overall length: 132.2 mm



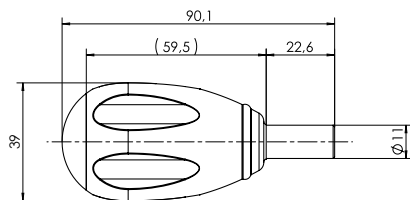
Other handle types and customizations available on request

SILICONE HANDLES

KNOBS

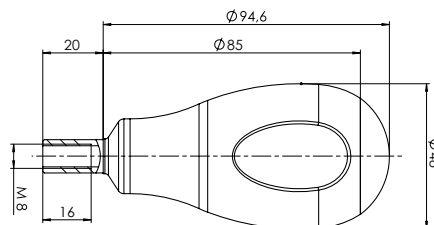
K41-059-M8
(13.070)

silicone length: 59,5 mm
overall length: 90 mm



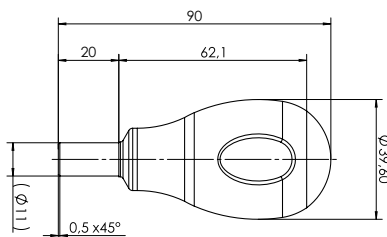
K48-085-M8
(14.890)

silicone length: 85 mm
overall length: 115 mm



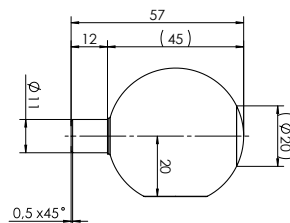
K40-063-M8
(10.590)

silicone length: 63 mm
overall length: 90 mm



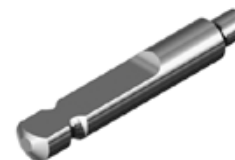
K45-M8
(13.415)

silicone length: 45 mm
overall length: 57 mm



Coupling systems

AO



LARGE AO



1/4"



HUDSON

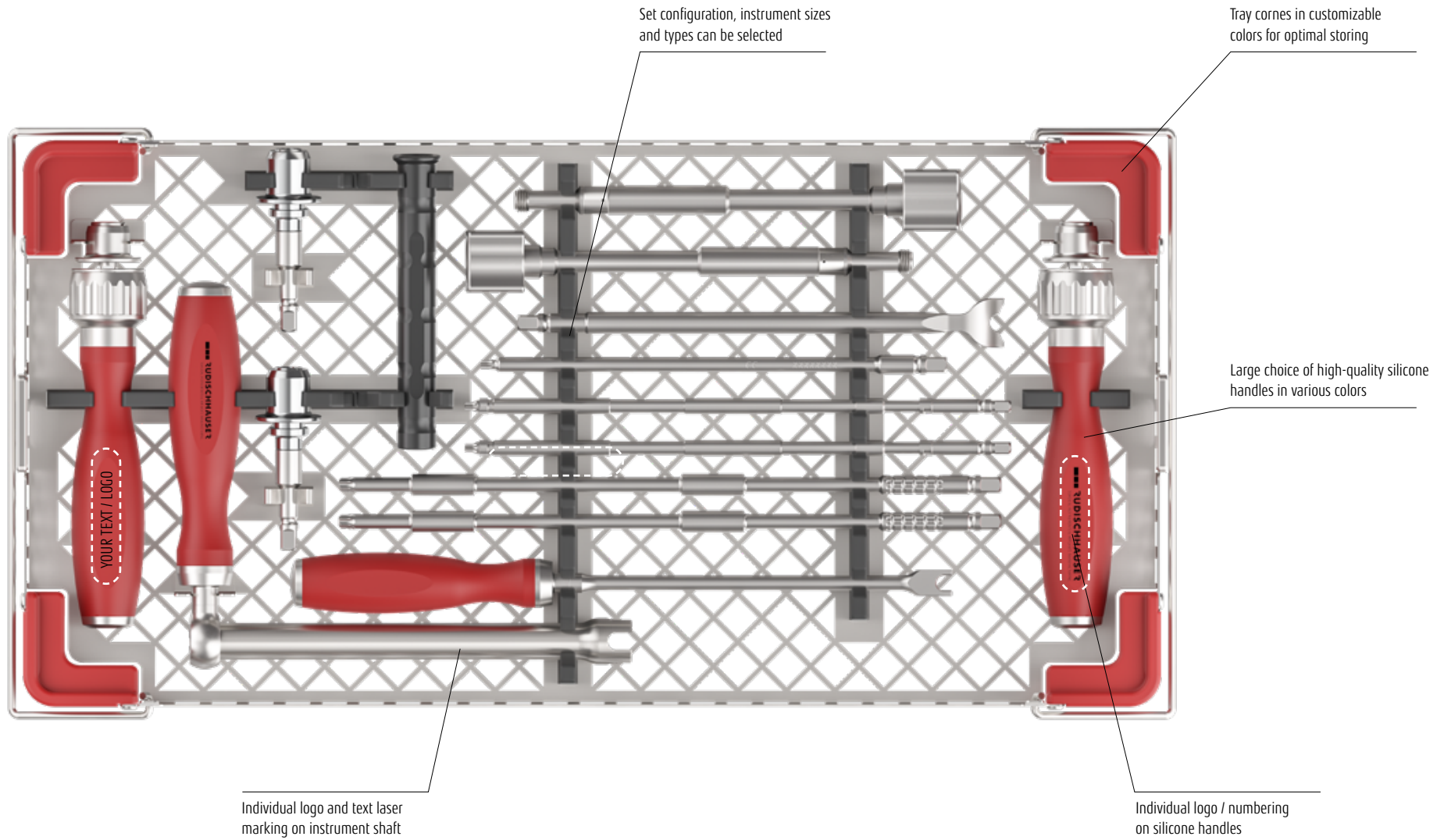


DENTAL



Dimensions and specifications
available on request

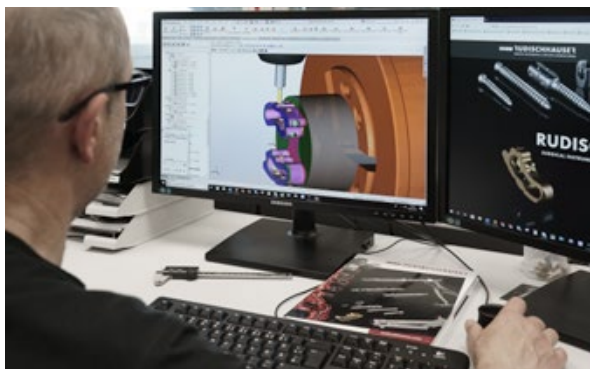
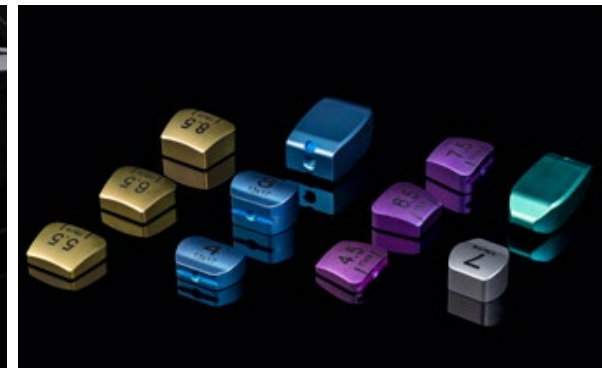
CUSTOMIZATION OPTIONS



ABOUT RUDISCHHAUSER GMBH

We are your contract manufacturer and development partner for superior-quality instruments and implants in all areas of spinal surgery, orthopaedics and traumatology. Employing the latest technology for development and manufacturing, we meet the regulatory requirements through validated processes and procedures to ensure your competitiveness in the international market.

Simply e-mail or call us. We welcome any challenge.

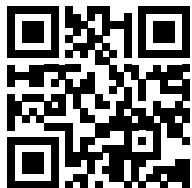


SPECIALIST IN SPINE, ORTHO & TRAUMA
INSTRUMENTS AND IMPLANTS

QUALITY IS OUR BUSINESS

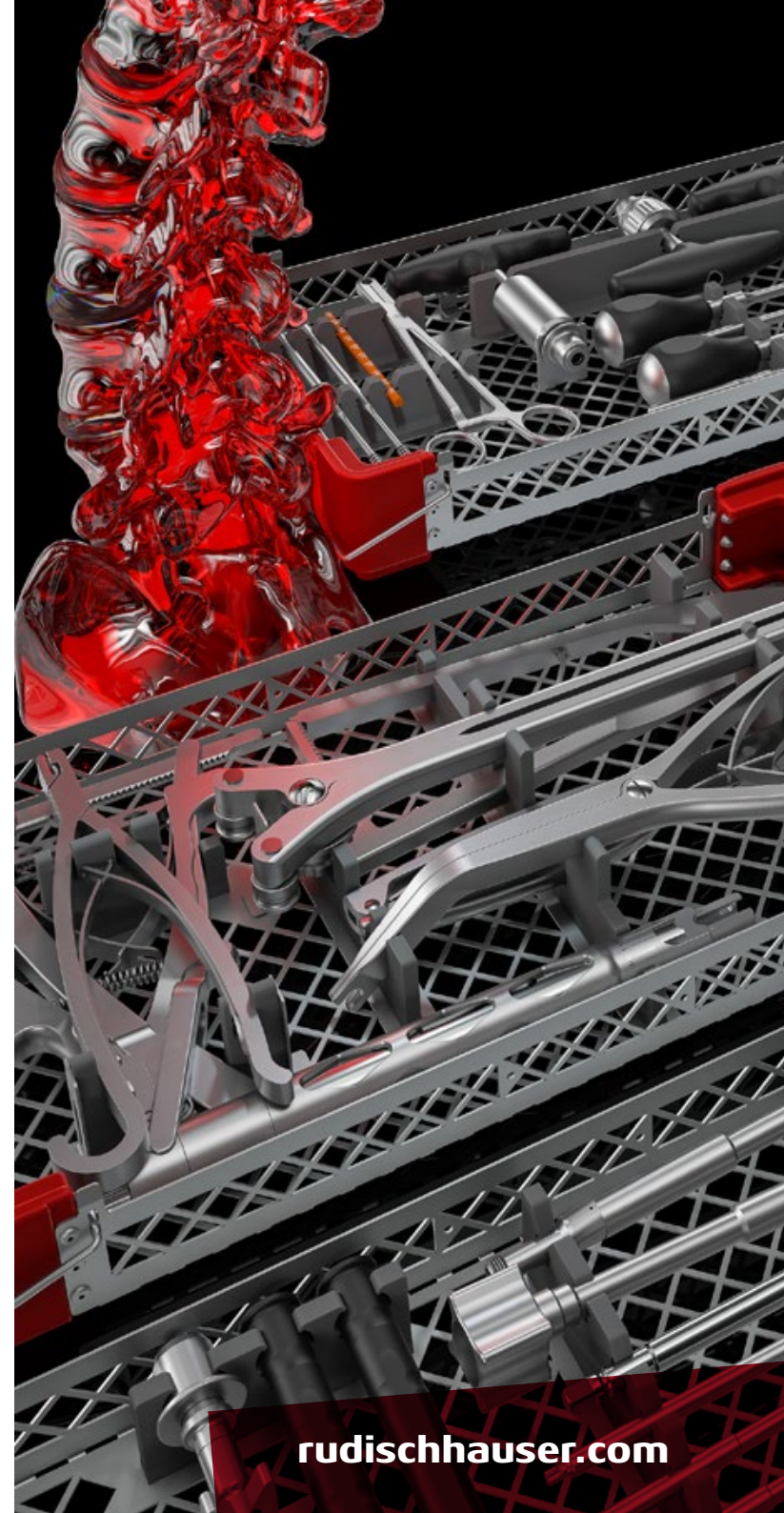
RUDISCHHAUSER

Surgical Instruments Manufacturing GmbH
Gänsäcker 28 Phone +49 7462 945629-0
78532 Tuttlingen info@rudischhauser.com
Germany




MADE IN GERMANY

As of 10/2023, technical data are subject to change. Rudischhauser Surgical Instruments and Implants Manufacturing GmbH reserves the right to make amendments and updates at any time without prior notice. © 2023 Rudischhauser V105



rudischhauser.com